



INTEGRATED BASIN DEVELOPMENT AND LIVELIHOOD PROMOTION PROGRAMME: Citizen Centric Governance

Presentation by Aiban Swer, OSD, MBDA



Why Integrated Basin Development and Livelihood Promotion Programme (IBDLP)?

- Meghalaya- Paradox of poverty amidst plenty
- No integrated framework for development
- Convergence—Most talked about, least implemented
- Young population getting younger & restless
- Large Intra state variations in opportunities
- Conventional “Beneficiary” approach not having desired impact



What is IBDLP?

A State Flagship Programme with a comprehensive approach to -

- Improve the quality of life of the citizens
- Ensure livelihood security
- Promote inclusive growth through sustainable use of Natural Resources
- Promote sustainable development across the state

OBJECTIVES OF IBDLP

- To ensure growth through inclusive and sustainable entrepreneur-led model implemented in convergence mode
- To promote knowledge-centric development through capacity building
- To promote creation of infrastructure in a convergent and participatory manner and
- Set up efficient, adaptive and responsive governance systems for facilitating the process

Guiding Principles: The 4 Ps

People

The people are the centre of all IBDLP interventions around which all strategic decisions are conceived.

Process

IBDLP operates under stringent processes to ensure inclusiveness and universal access.

Policy

Decisions under the programme have their foundation on strong policies to ensure fairness and equity of development.

Participation

Community Participation is the core for ownership and sustainability of programme interventions.

CITIZEN CENTRIC, BOTTOM UP APPROACH TO DEVELOPMENT

Demand Driven

IBDLP focuses on collecting demands of the citizens and creating necessary eco-systems to facilitate developmental actions based on these demands

Partnership model as opposed to beneficiary model

- No subsidies or schemes; citizens are encouraged to undertake profitable activities and generate their own livelihoods
- Partnership fosters ownership and accountability thus ensuring sustainability of interventions

Thrust on Entrepreneurship

- IBDLP creates eco-systems within which aspiring entrepreneurs can take wings and thrive
- Reduced dependency on government schemes
- Citizens are provided with technical and non-technical support to pursue livelihood activities of their choice

CONVERGENCE AT THE HIGHEST LEVEL OF GOVERNMENT

The **institutional structure** for the implementation of IBDLP involves the participation of the highest level of Government to ensure convergence down the entire structure



ENTERPRISE FACILITATION CENTRES (EFC) - THE FRONT DESKS

Interface between the People and the Government

- Present in every block of the state
- Single window where citizens can walk in and voice their desires and aspirations for self development
- Prioritization of developmental intervention based on demands
- Window for government to look into the demands of the people

Incubation and handholding

- Counselling of potential entrepreneurs on available opportunities
- Assessment of demand and matching it to the available resources of the citizen
- Support with preparation of business plans, loan applications, etc.
- Training, handholding, exposure visits and knowledge sharing

THE FOUR PILLARS OF IBDLP

IBDLP

ENTREPRENEURSHIP

Institute of Entrepreneurship

- Human Capital Development
- Enterprise Facilitation
- Rural Financial Inclusion
- Market Access
- Cross cutting interventions in Mission Mode

NATURAL RESOURCE MANAGEMENT

Institute of Natural Resource Management

- Natural Resource Mapping
- Springshed Rejuvenation
- Climate Change Research and Adaptation
- Bio-resources Development
- Action Research

GOOD GOVERNANCE

Institute of Governance

- Simplifying Governance
- Change Management through Leadership Development
- Research and Documentation
- Impact Assessment

KNOWLEDGE MANAGEMENT

Knowledge Services Division

- Documentation of Indigenous Knowledge
- Action Research
- Dissemination of Knowledge and Information
- Communication and Outreach
- Publications

MISSION MODE APPROACH TO IMPLEMENTATION

THE 9 MISSIONS

Apiculture

Water

Tourism

Sericulture

Aquaculture

Horticulture

Forestry

Livestock

Rural Energy

THE 11 ACCOMPANYING MEASURES

Information and Comm. tech

Knowledge Management

Communication

Capacity Building

Infrastructure

Governance

Policy Support/ Legislation

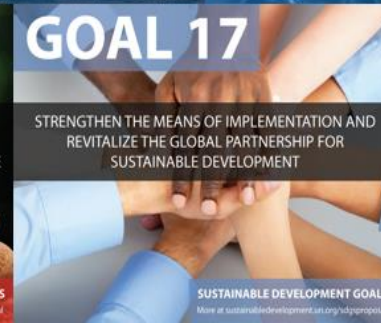
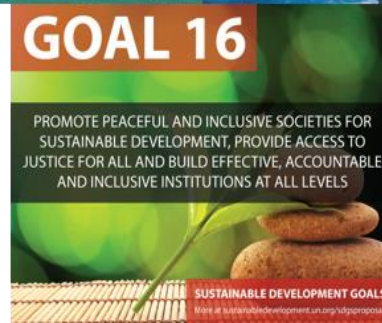
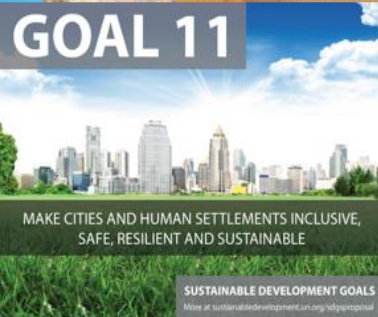
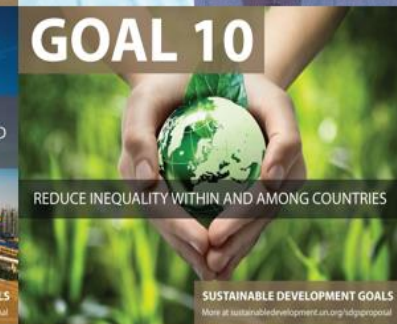
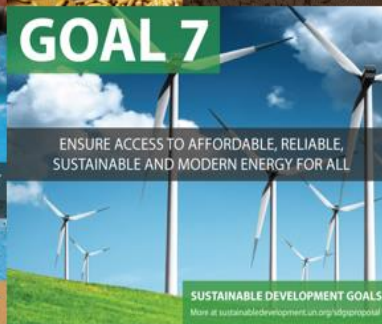
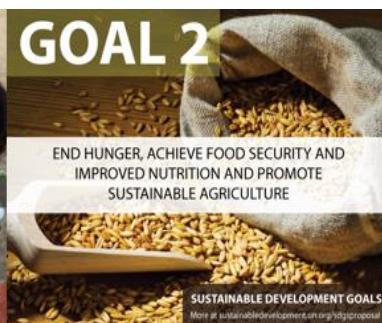
Institutional development

Financial inclusion

Market Linkages

Convergence

IBDLP IS ALLIGNED TO ADDRESS THE 17 UNITED NATIONS SUSTAINABLE DEVELOPMENT GOALS



DEMAND DRIVEN AND INCLUSIVE GOVERNANCE



Enterprise Resource Persons at the EFCs engaging in dialogue and recording aspirations and demands of partners at the Pynursla EFC, East Khasi Hills



Mobilization of school dropouts at Warmawsaw Village, Jirang, Ri Bhoi for various programmes under MDBA



Dialogue with market stakeholders on market issues and participatory solutions, at Baghmara, South Garo Hills



Sensitization and knowledge exchange on Community Seedbank



Social Impact Assessment on Construction Of Facilitation Centre –Entry and Exit Points at Malidor ,East Jaintia Hills



Dialogue on eco-tourism potential and horticulture issues with Headmen, women representatives and youth of seven villages at Nongnah Cluster, South West Khasi Hills

PARTICIPATORY PLANNING



Discussion on community identified INRM activities for intervention by development agencies, at BDU Khliehriat, East Jaintia Hills



PRA Exercise Under INRMP at Pamdaba Village, South West Khasi Hills.



State level consultative workshop on promoting Green Economy at State Convention Centre



Social and Resource Mapping under IVDP at Sohlait Thymmai, Ribhoi District



Consultative Workshop on the promotion of sustainable use of Bio-resources



Consultative workshop for designing the upcoming statewide Community Led Landscaping Management Project to be supported by World Bank

SYNERGY THROUGH CONVERGENCE



Simsang River Bridge at Williamnagar, East Garo Hills, constructed under Gap Funding by MBDA



Members at a community nursery at Cham Cham, West Jaintia Hills, built through MBDA investment



Seedbank setup through MBDA investment, which is managed by the Ryntihlang CLF at Cham Cham, West Jaintia Hills



Chandigre Rural Park built through convergence funding



Plastic Cell Technology Road at Ellengre, South Garo Hills, constructed through convergence with MGNREGA



Mawlongbna reservoir built through gap funding

KEY INSTITUTIONAL PARTNERS



THANK YOU