

GeoPortal on North Eastern District Resources Plan to support effective Governance applications



Shri PLN Raju

Director

**NORTH EASTERN SPACE
APPLICATIONS CENTRE**

www.nesac.gov.in



About NESAC

Space Technology for benefit of NE Region

Mapping & Monitoring of Natural resources

Providing inputs to users for development planning in NER

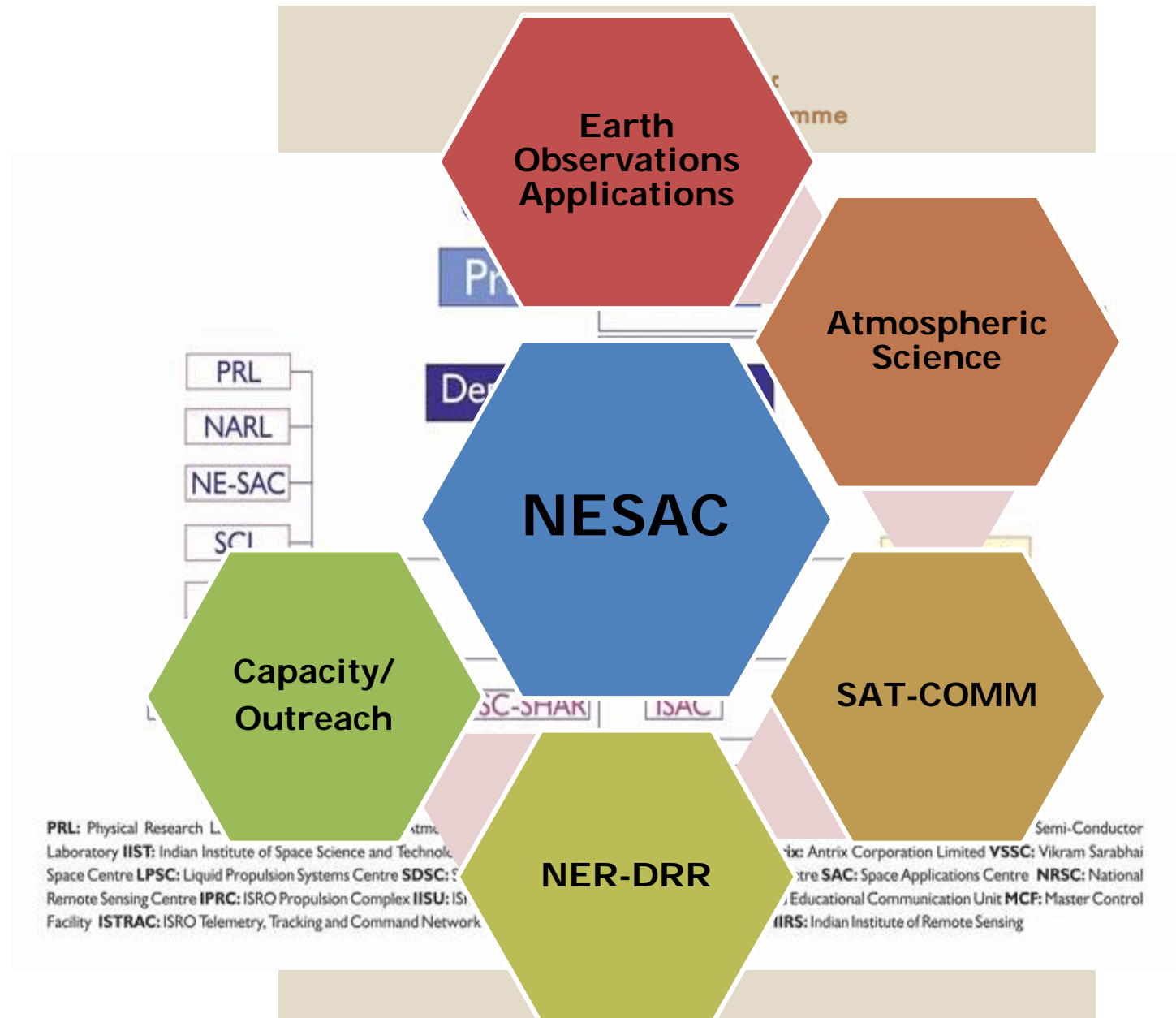
Effective Disaster Mitigation Mechanism

► **Specific regional projects & R&D activities**

Information dissemination

Academic interface & Capacity building

NESAC was established on 5th Sept, 2000 under the **joint initiative of DOS and NEC.**



Expanding Capacity building & Outreach

Certificate courses

- 3 months Certificate course
- 1 Yr Post Graduate

Master Degree courses

- Mtech/Msc (GeoInformatics)

PhD Programme

- With NEHU, DU etc.

Facilities

- High speed campus 10 G Wifi
- Smart class room (2)
- Sophisticated lab (2)
- Hostel (60 seater)
- Library facility



New Outreach
facility

Capacity building & Outreach

■ Regular Certificate courses (4)

- Basic course- RS & GIS
- Advanced courses- Advanced GIS, UAV, Microwave RS etc.

■ Tailor made courses (6)

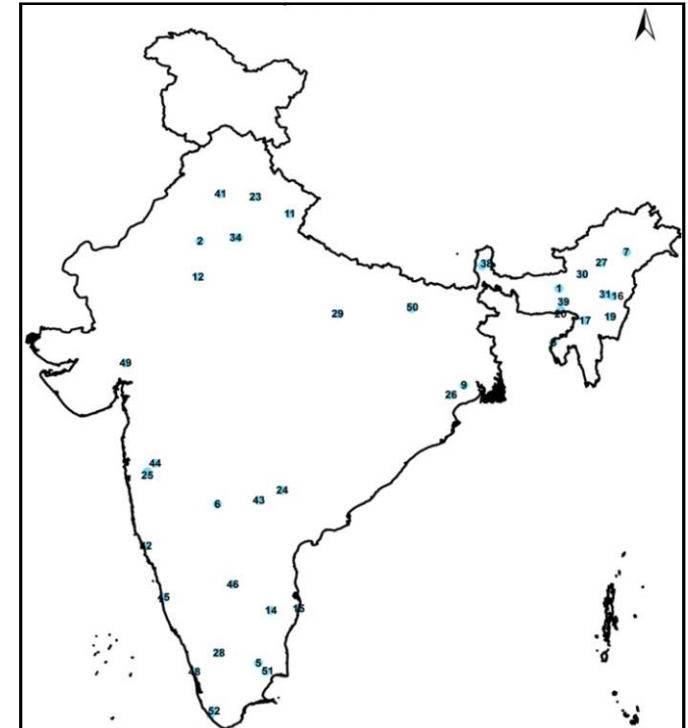
- Different Govt. Dept.
- Educational Institutes

■ Encouraging students

- Students Internships (198)
- Students visit (1200+)

■ Academic linkages

- Academic interactions – 155 participants & 21 Institutions
- MoU - NEHU, USTM, DU, DBU, KazU, NIT-M etc.
- Collaboration- ICAR, NEIST, NU, AAU etc.



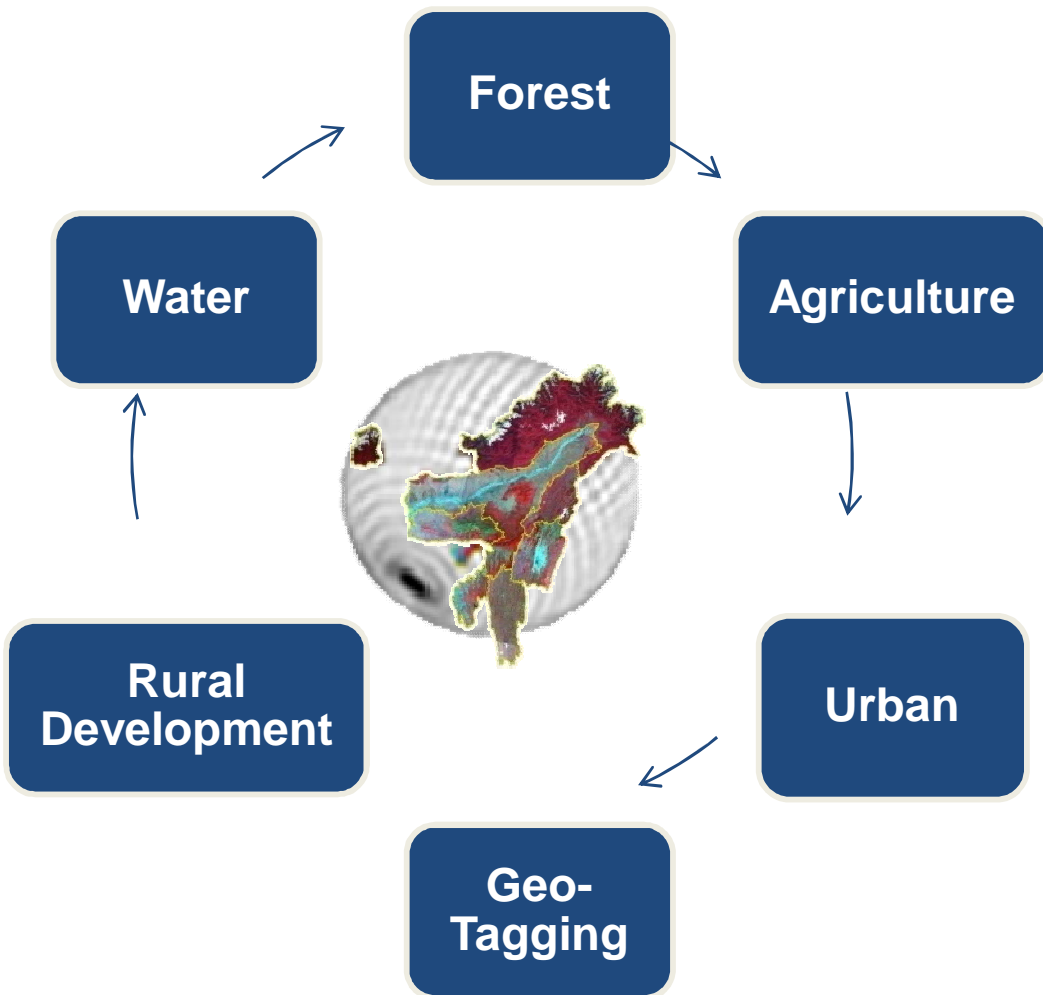
Students from different parts of India

Large Nos of
Workshops/Exhibition



Impact

Major Application Sectors

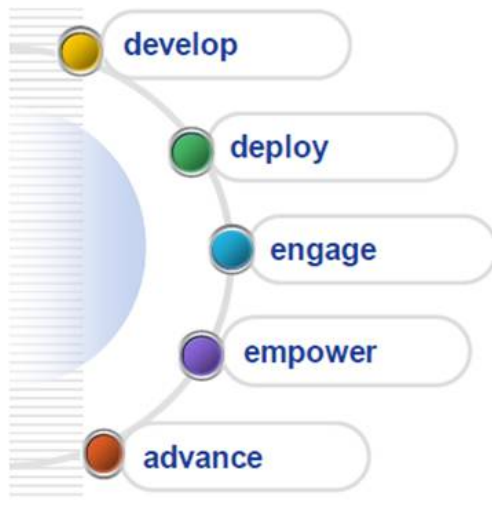


- Monitoring the schemes and making the system accountable
- **Bringing transparency in data**
- Evaluating polling booths for the conducting hassle-free elections
- **Strengthened the planning of watershed management**
- Improved telephone network connectivity for Meghalaya
- **Reported 5000+ Forest fire incidents**

- 15+ Governance Apps 10+ Mobile Apps
- 2.6 Million Sq Km data Processing

Relevance

- Lack of Transparency
- Improper monitoring
- Authenticity: Improper Plans
- Data sharing issue: common format
- Redundancy: duplication of efforts
- Lack of awareness on GIS
- Data not available in proper way



North Eastern District Resource Plan
उत्तर पूर्वी जिला संसाधन योजना



Benefits

- Maximizing the use of GIS for Planning
- Better decision making : land & water resources, assets & Infra planning- Improving livelihood prog. etc.
- To support maximum use of public resources
- Equity of access- to ensure better access to all bonafide users
- Ownership of the system



Objectives



- **User need assessment** through awareness programme
- **Integration of relevant Geospatial data** at 1:50K (district) & 1:25K (block) scales
- **Single Window Dashboard Web Applications** to enhance the Governance activity
- **Geo-processing tool** to support user demand criteria & Plans
- **Capacity building/Outreach** for maximum utilization of Space inputs.

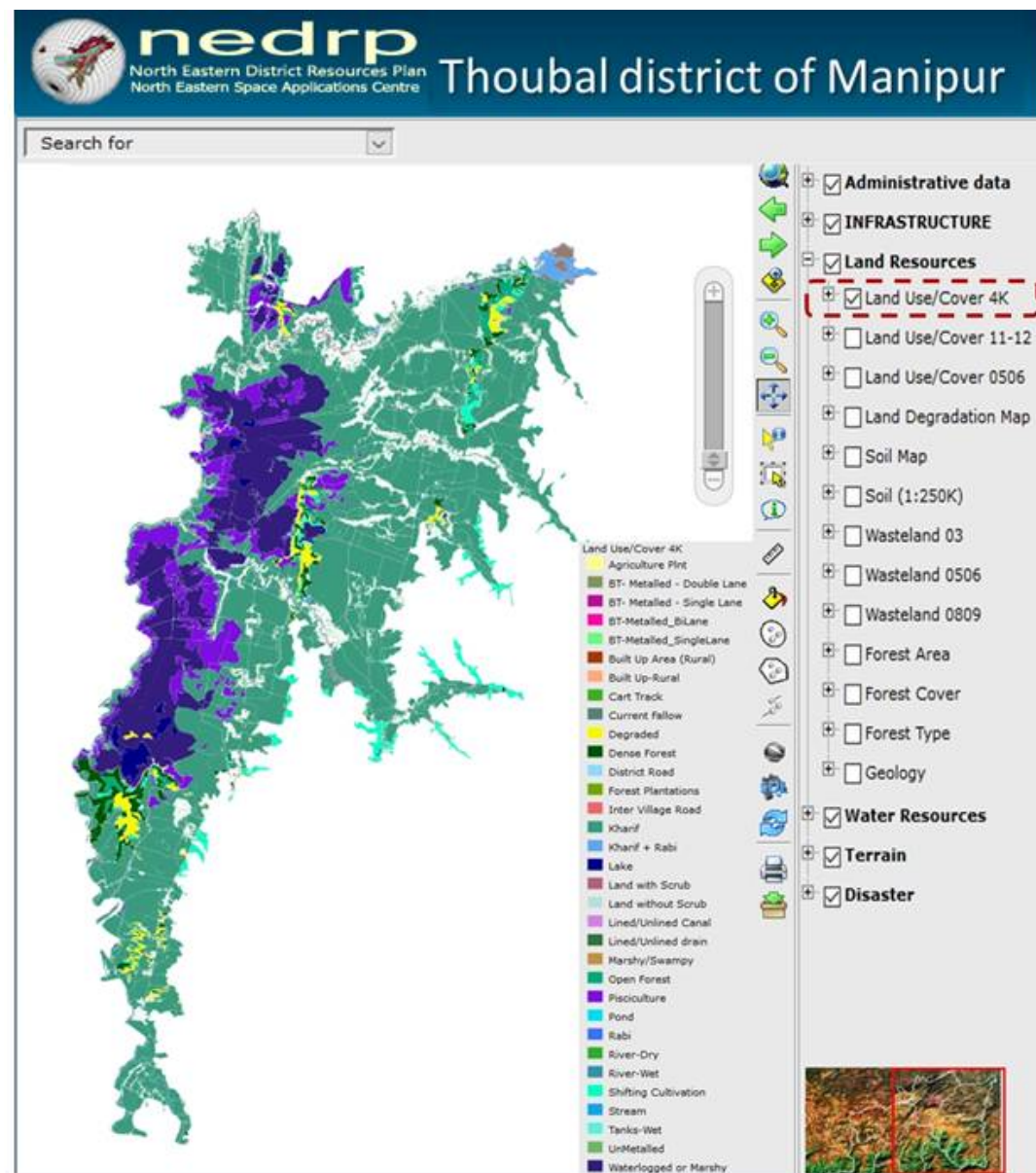
Database availability

Every district contains

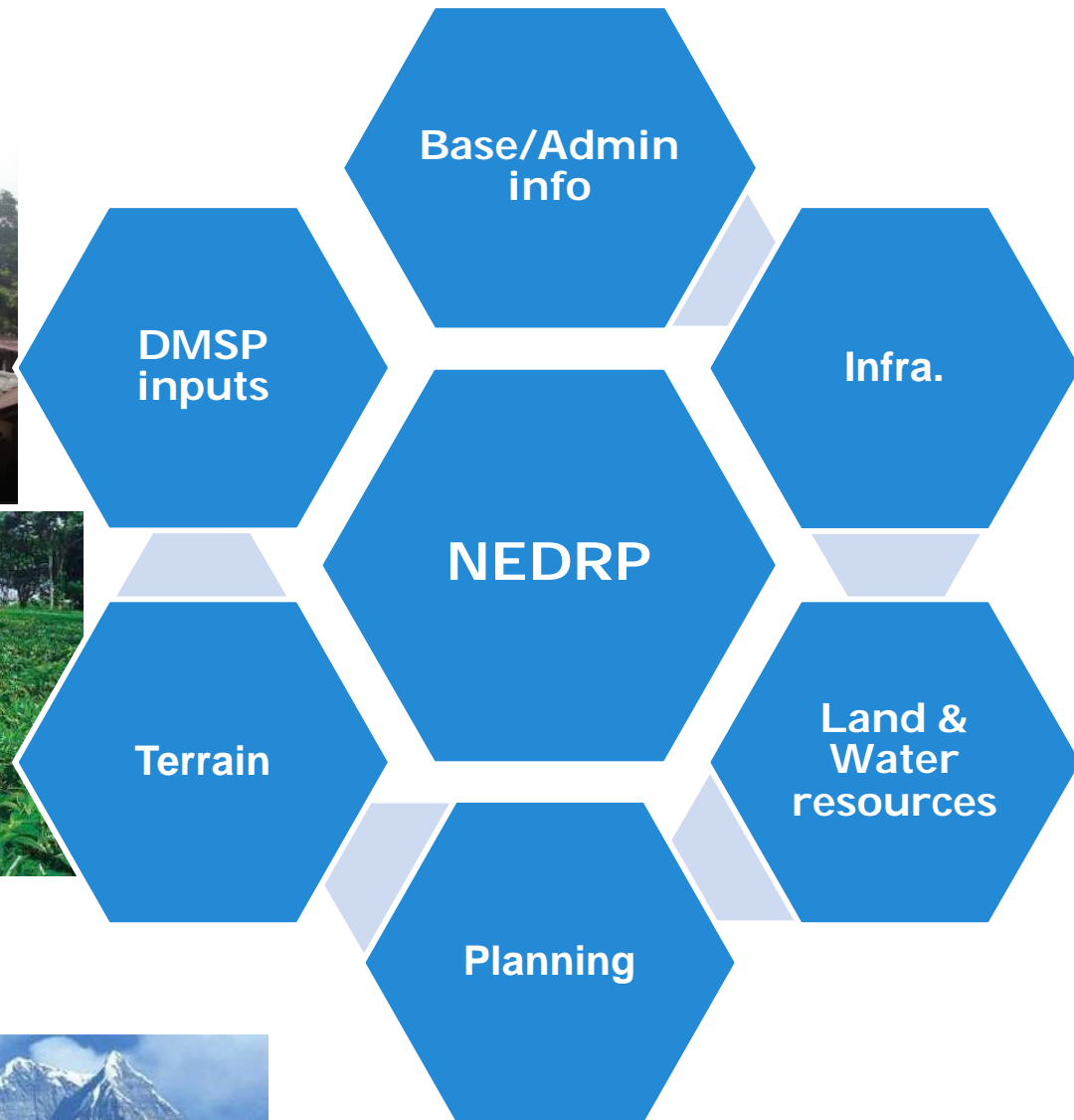
Information Modules	Nos of layers
Base/Admin data	8
Infrastructure	4
Land resources	10
Water resources	6
Planning inputs	3
Terrain	4
Disaster Management Support	3
Total	30-35

Total layers integrated

- More that 2820+ layers pertaining to 101 districts
- Total 3127 + point layers for Governance applications



Information Modules





Geospatial Applications & Services

Updates | Releases

State Level NEDRP Workshop at Imphal
on 29th November, 2017

NEDRP to support Village Resources
Planning for MBDA

Additional 56 districts added into

[Read more..](#)

Other ISRO/ DOS Portals

ISRO Bhuvan

SILKS

MOSDAC

INDIA WRIS

APIB

NERDRR

Visitor Statistics

5395

FEEDBACKS

UPCOMING WORKSHOP

STATEWISE WORKSHOP 2017



ElectionGIS

Election GIS
provides
information on the
polling areas,
polling states...



Project Monitoring

Monitoring the
status of the
Projects of North
Eastern Council
(NEC).....



CensusGIS

Provides
demographic
details based on
the 2011 census
records...



GeoTourism

Geovisualization of
tourist hotspots on
satellite imagery...

Geo Explorer

2D Data Visualization and planning tool for
districts of NE states

Choose State

Select District

[Open GeoPortal!](#)

User Manual Flyer

Data Services

Data sharing Gateway for the registered users

[Login](#)

Governance Applications



ForestGIS

Information
regarding forest
cover, forest
density...



LiveGIS

To generate forest
fire vulnerability
zone...



VRIS

Village Resource
Information System
for Meghalaya
Basin Development
Authority



SericultureGIS

A single window
information system
for the planners,
administrators and
farmers...

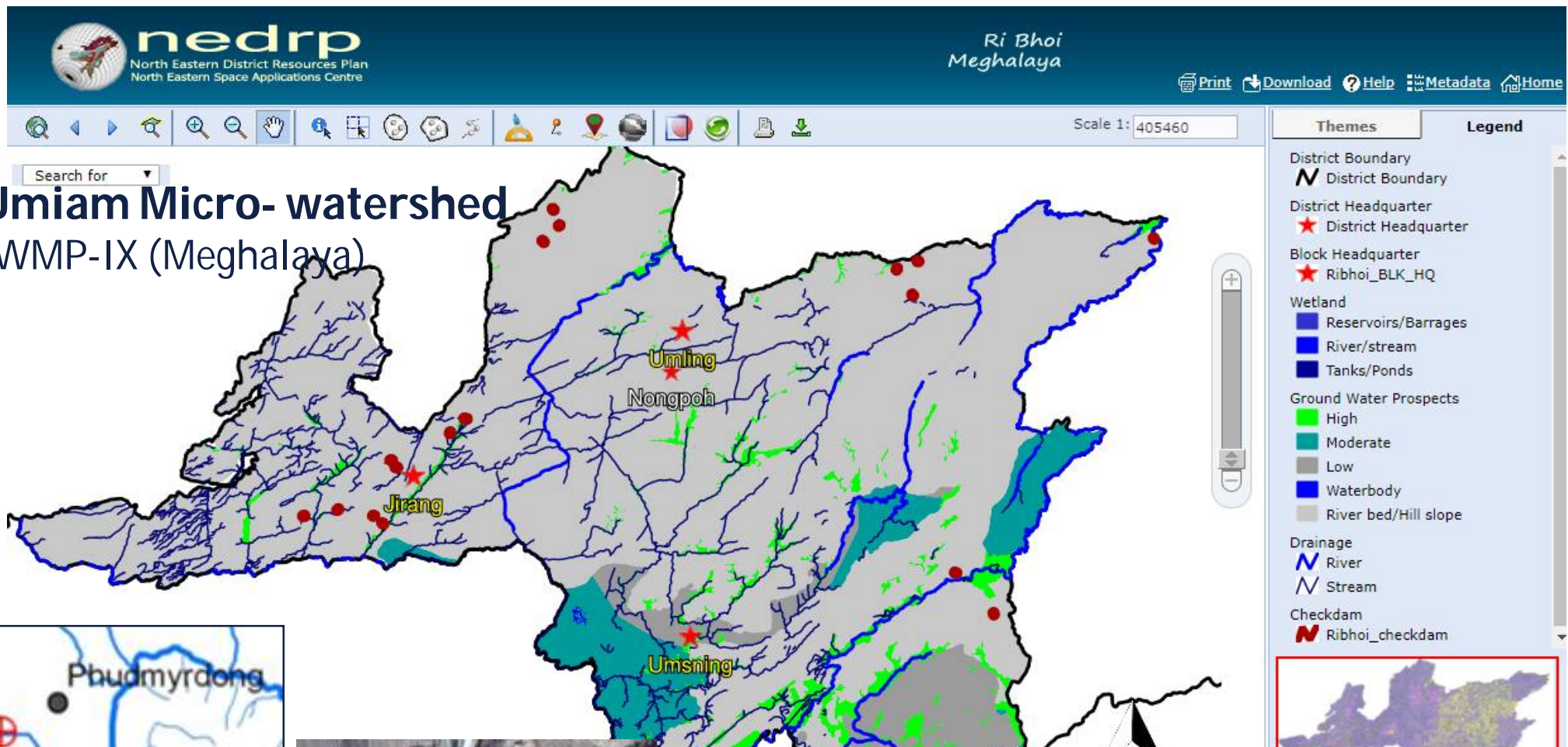


Optimal locations of Mobile Towers



Total 9000 + uncovered villages in NER and 2000+ Mobile Tower locations proposed (DPR inputs for Department of Telecom, GOI)

Strengthening the Planning of IWMP



Umiam Micro- watershed IWMP-IX (Meghalaya)

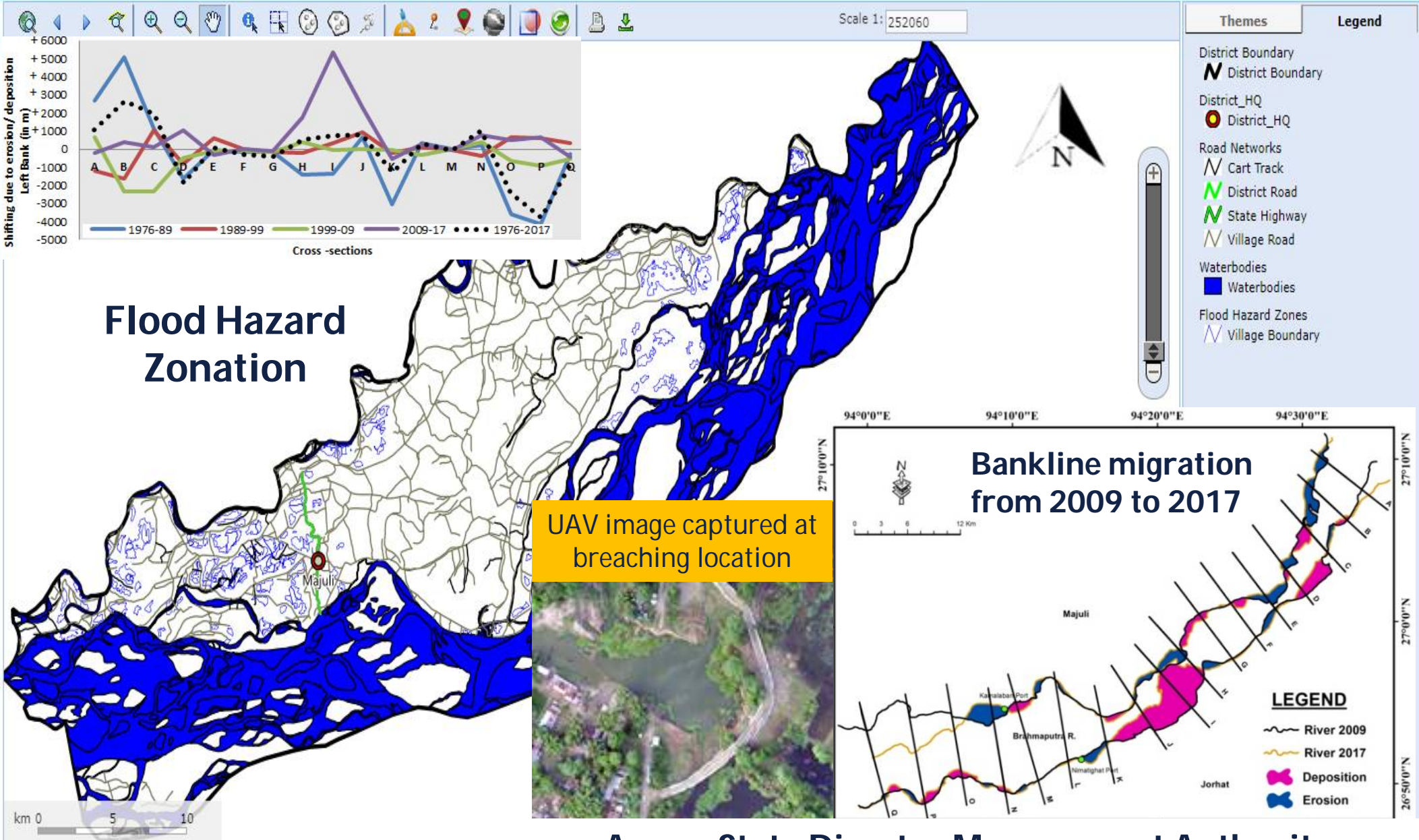


- Settlements
- Check Dam
- Dug out pond
- ⊕ Water Harvesting Structure

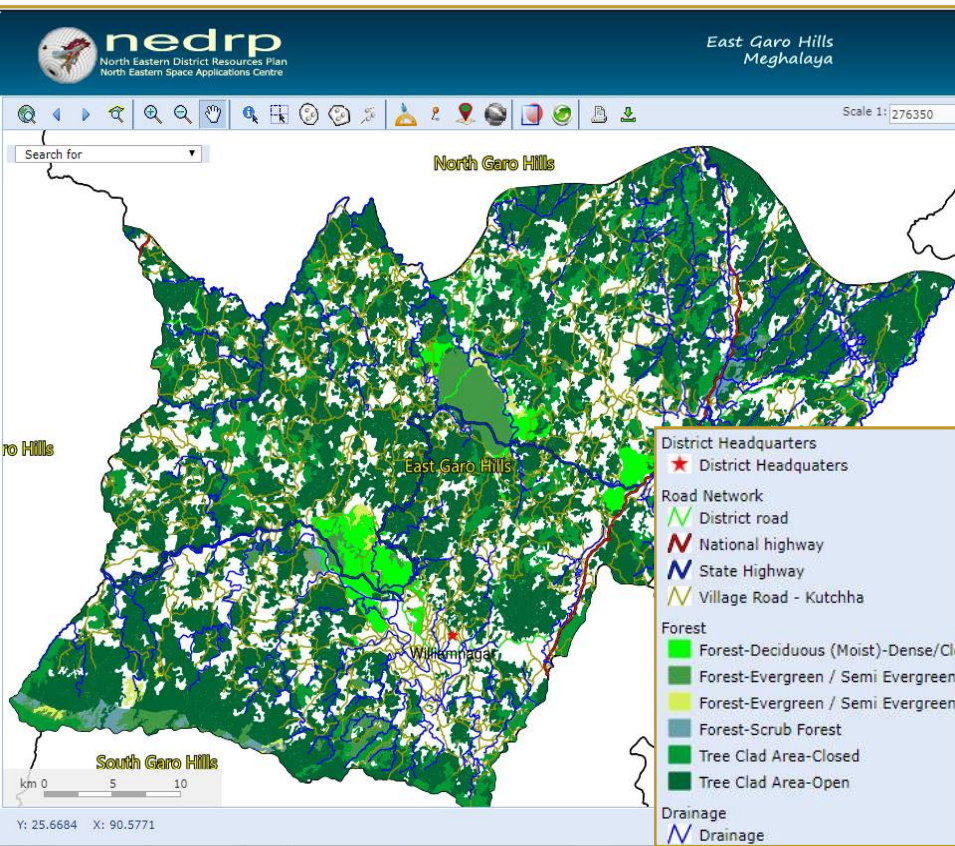


Inputs are being used successfully for preparation of DPRs for implementation of IWMP - **Basin Development Authority**

To support Disaster management



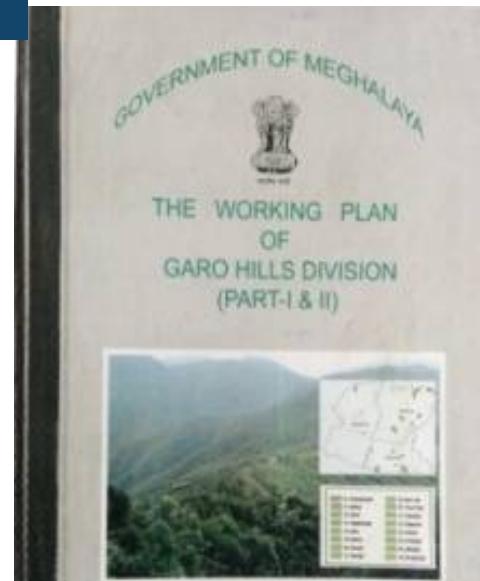
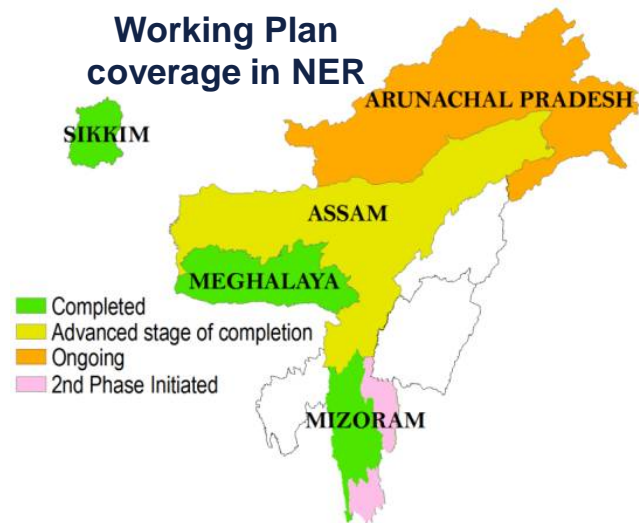
Achievements in Forestry



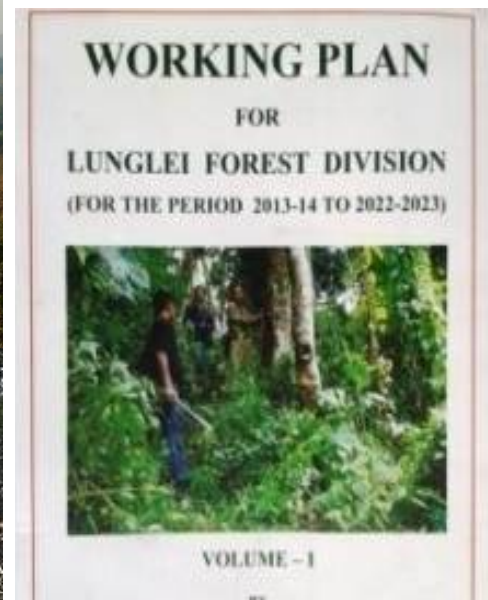
Success Story

- Forest Working Plan for Meghalaya and Mizoram have been approved
- Deliverables are also being used for environment related study

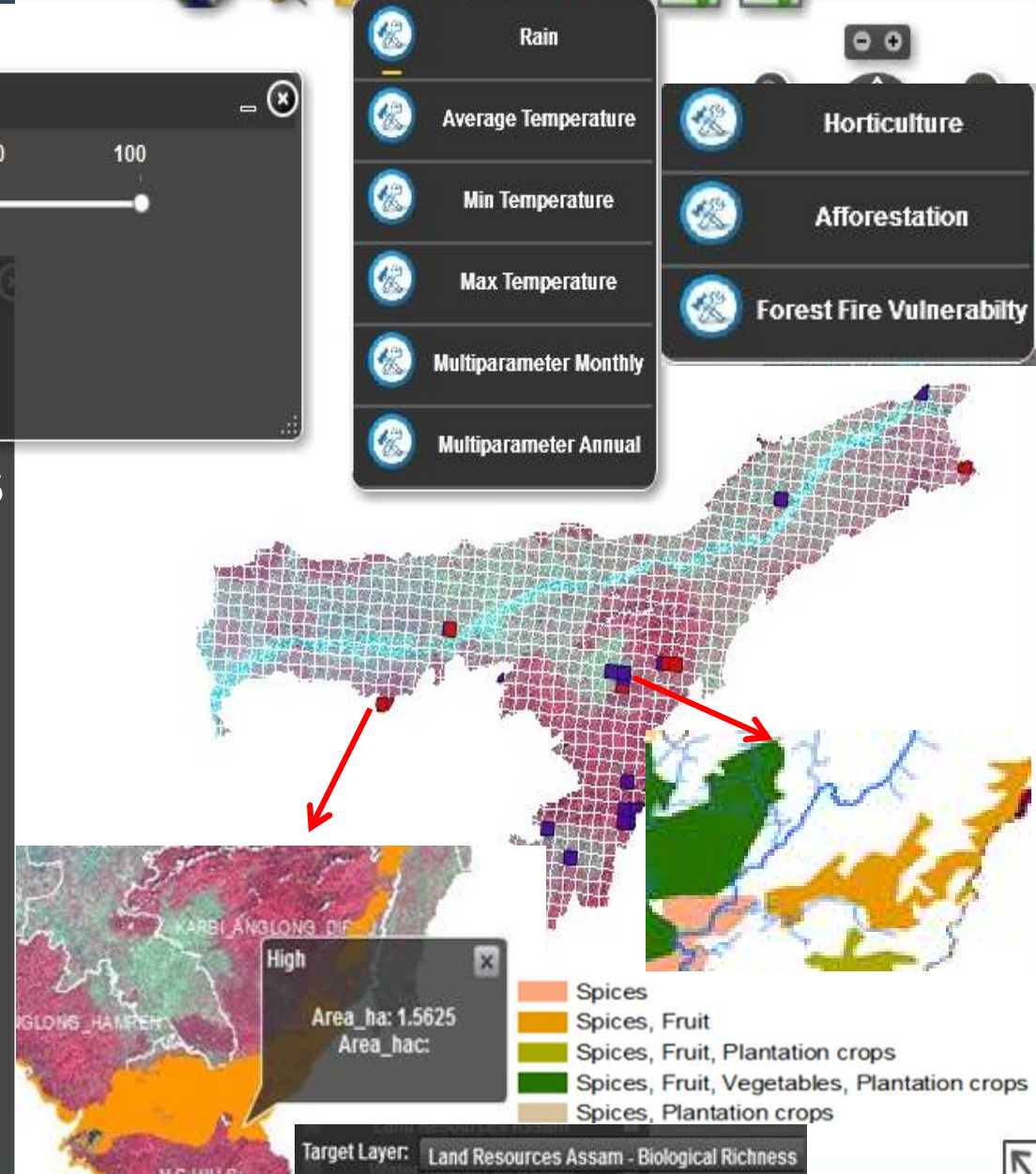
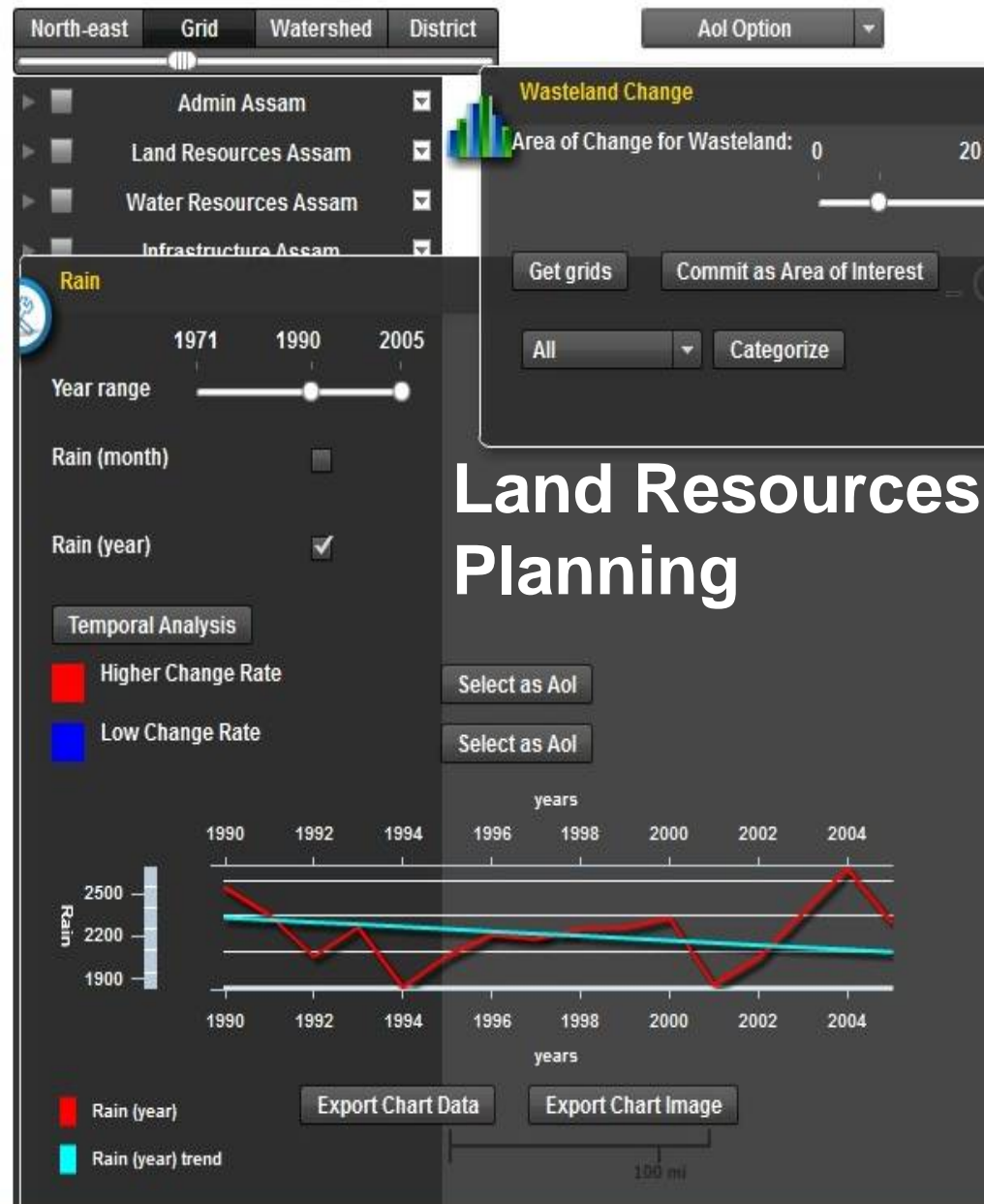
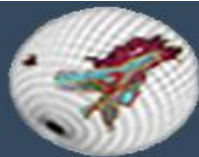
Land Resources & Forest density map



Approved Working Plan for Garo Hills Forest Division



Working Plan for Lunglei Forest Division



Enhanced Geo-Processing Capability

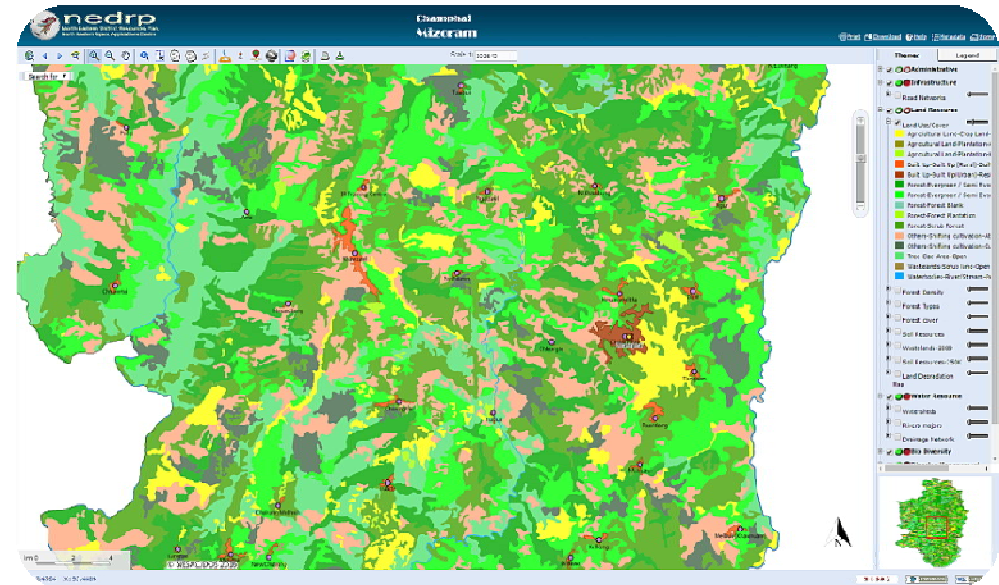
3 ways to Access to NEDRP

- NEDRP Portal – Visualize, Analyze, Extract info

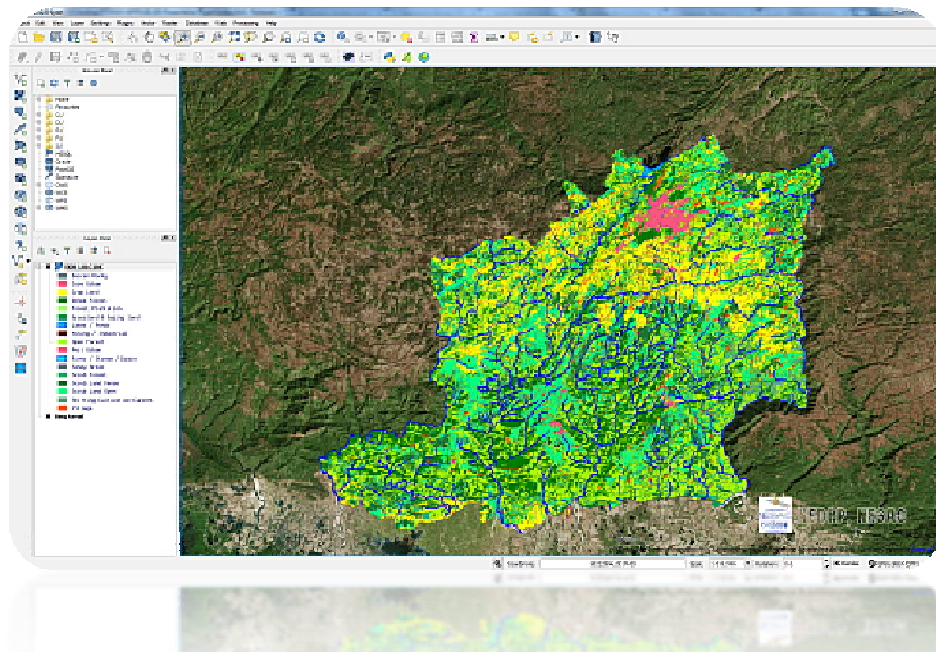
www.nedrp.gov.in



- Access data as service - MAPS as a service. Viz WMS, WMTS, WFS etc

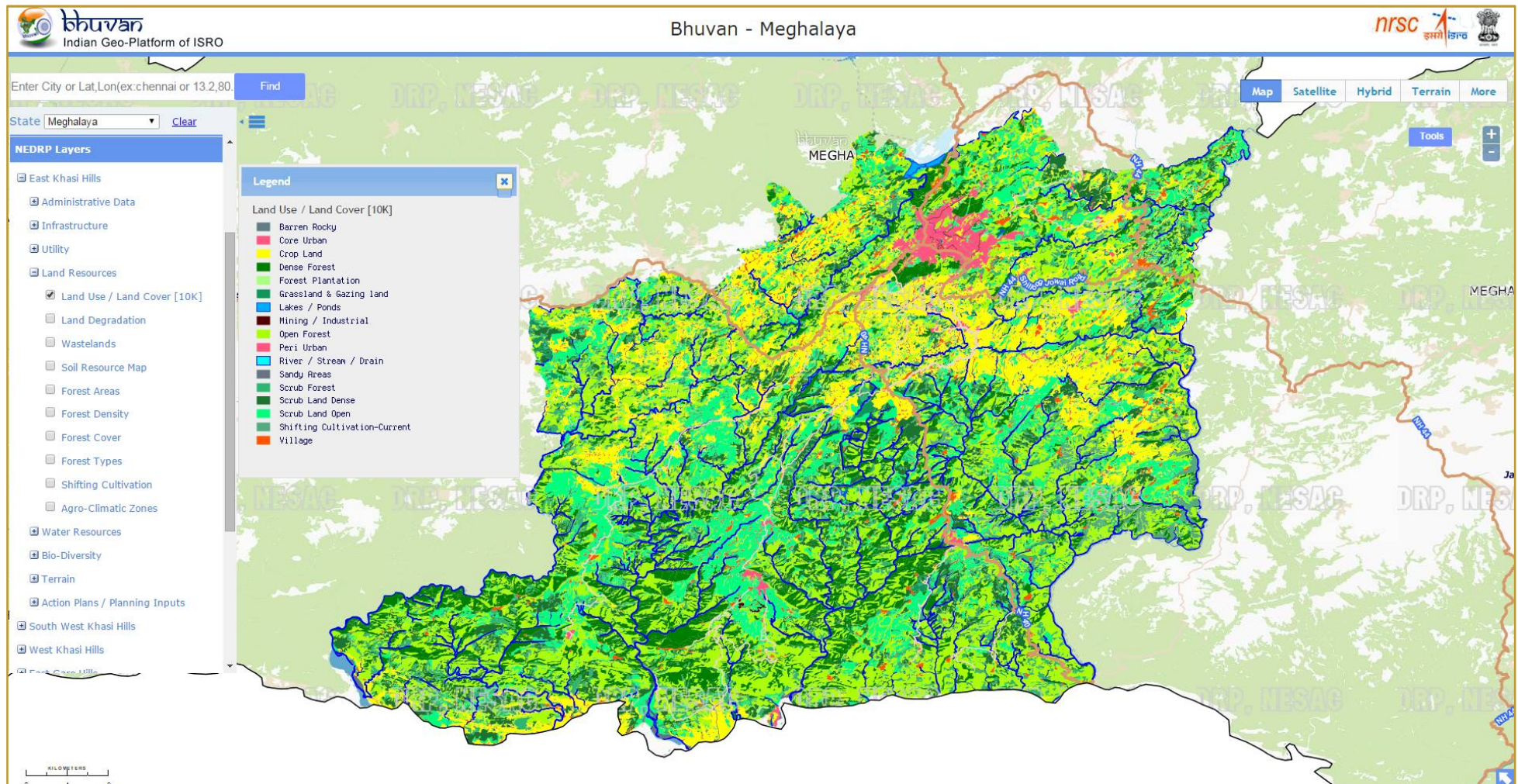


- Download GIS Datasets - via Data Sharing Gateway. <http://data.nedrp.gov.in>



Access NEDRP via OGC web service

- Access data as service - MAPS as a service. Viz WMS, WMTS, WFS etc



NEDRP Data as accessed and visualize in ISRO Bhuvan Geoportal
<http://bhuvan.nrsc.gov.in>

GeoExplorer – 2D Data Visualization



North Eastern District Resource Plan
उत्तर पूर्वी जिला संसाधन योजना

North Eastern Space Applications Centre
उत्तर पूर्वी अंतरिक्ष उपयोग केंद्र

Geospatial Applications & Services

[NESAC](#) [About NEDRP](#) [Collaborations](#) [Contact Us](#) [Disclaimer](#)

Updates | Releases

State Level NEDRP Workshop at Imphal on 29th November, 2017
NEDRP to support Village Resources Planning for MBDA
Additional 56 districts added into NEDRP
[Read more..](#)

Other ISRO/ DOS Portals

[ISRO Bhuvan](#) [SILKS](#) [MOSDAC](#) [INDIA WRIS](#)
[APIB](#) [NERDRR](#)

Visitor Statistics

5606

[FEEDBACKS](#)

[UPCOMING WORKSHOP](#)

[STATEWISE WORKSHOP 2017](#)



ElectionGIS

Election GIS provides information on the polling areas, polling states...



Project Monitoring

Monitoring the status of the Projects of North Eastern Council (NEC).....



CensusGIS

Provides demographic details based on the 2011 census records...



GeoTourism

Geovisualization of tourist hotspots on satellite imagery...

GexExplorer – 2D Data Visualization and planning tool for NER districts

Geo Explorer

2D Data Visualization and planning tool for districts of NE states

[Choose State](#) [Select District](#) [Open GeoPortal](#)

[User Manual Flyer](#)

Data Services

Data sharing Gateway for the registered users

[Login](#)



ForestGIS

Information regarding forest cover, forest density...



LiveGIS

To generate forest fire vulnerability zone...



VRIS

Village Resource Information System for Meghalaya Basin Development Authority



SericultureGIS

A single window information system for the planners, administrators and farmers...



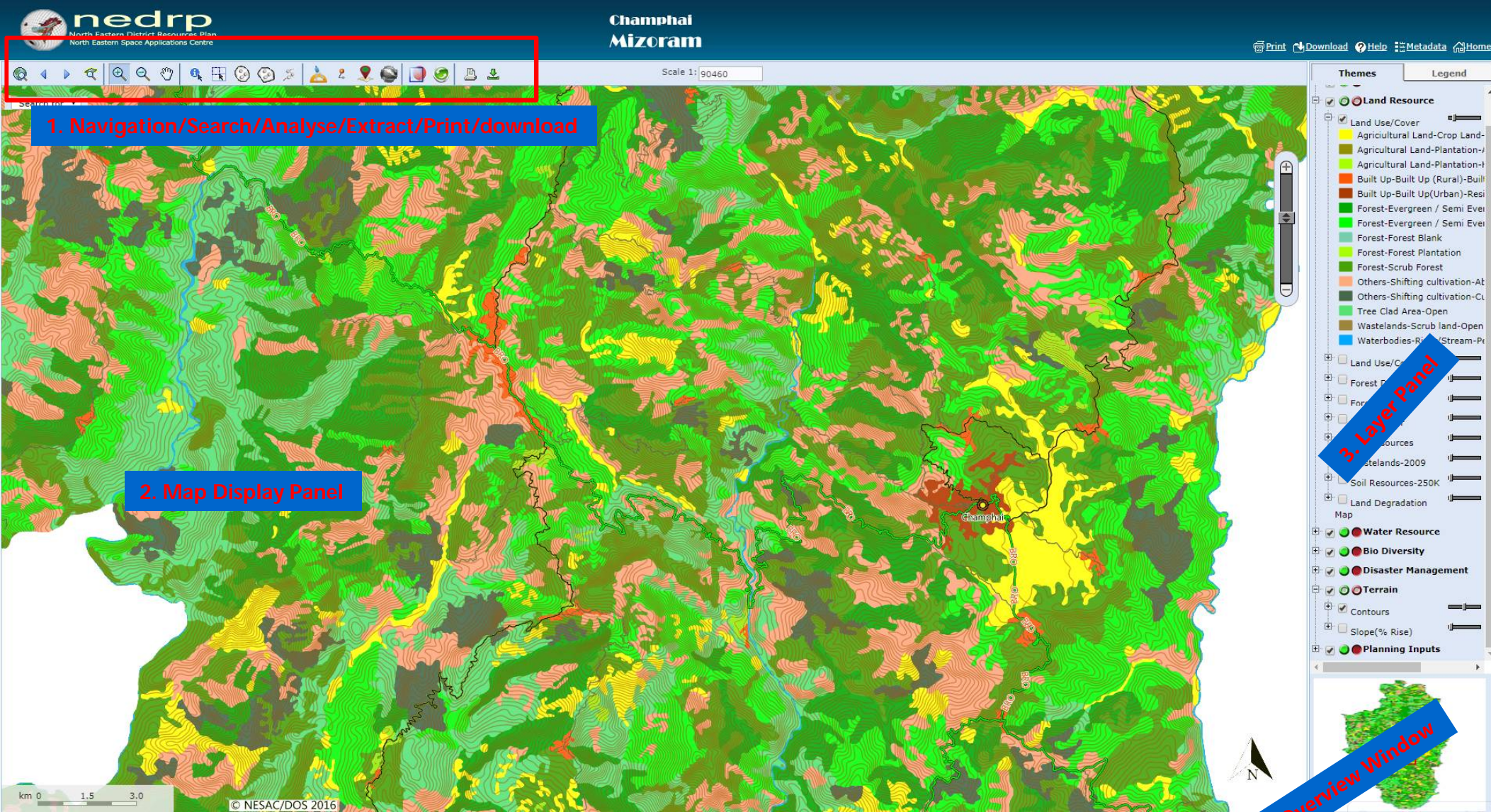
Copyright © 2017 NEDRP

Beta version released on 05.09.2015 | Full version released on 05.09.2016 | Site Last Updated on 05.01.2018

North Eastern Space Applications Centre | Government of India, Department of Space | Shillong - 793 103, Meghalaya, India

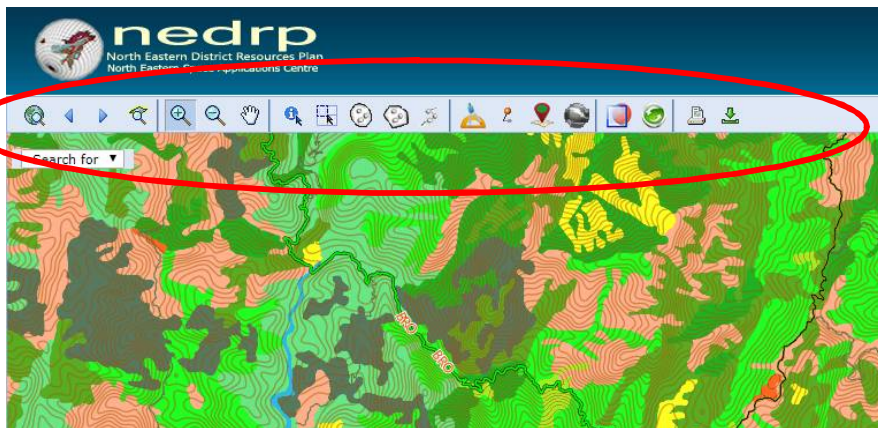
NEDRP Recognition and awards : National Awards on e-Governance 2017-18

NEDRP Portal for Champhai District, Mizoram

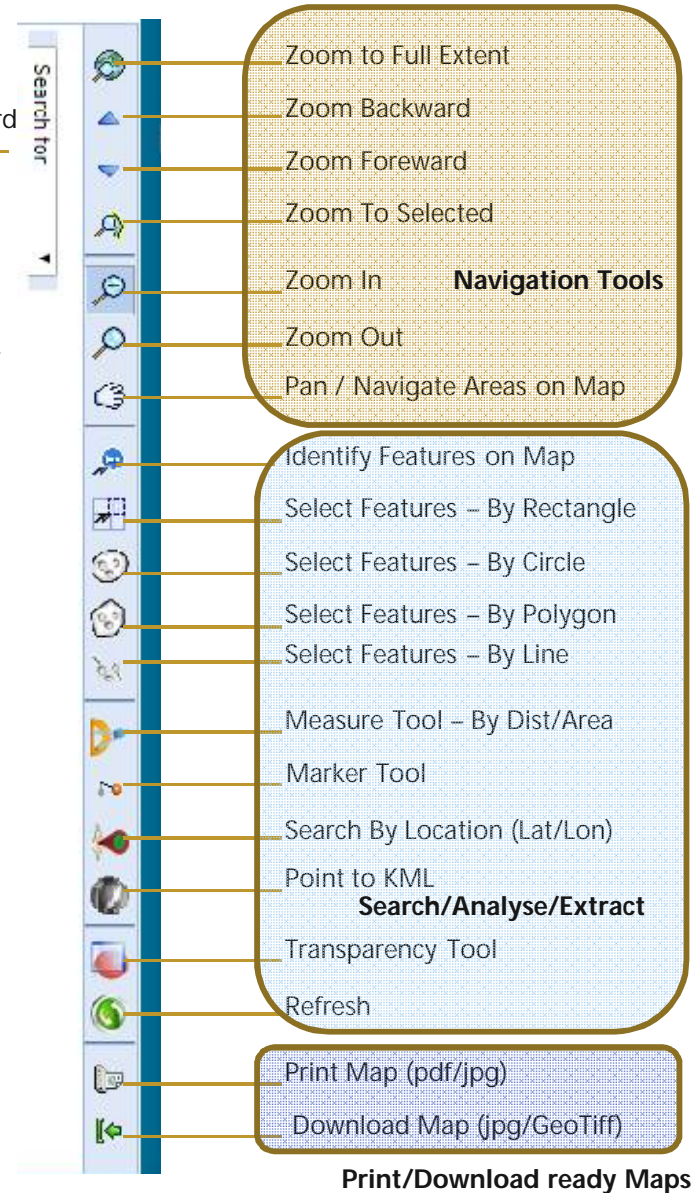


Understanding & Operating the NEDRP Portal Tools

21 Inbuilt GIS Tools for Interacting with the map dynamically



Search by Keyword





ElectionGIS

Election GIS provides information on the polling areas, polling states...



Project Monitoring

Monitoring the status of the Projects of North Eastern Council (NEC).....



CensusGIS

Provides demographic details based on the 2011 census records...



GeoTourism

Geovisualization of tourist hotspots on satellite imagery...

Governance Applications



ForestGIS

Information regarding forest cover, forest density...



LiveGIS

To generate forest fire vulnerability zone...



VRIS

Village Resource Information System for Meghalaya Basin Development Authority



SericultureGIS

A single window information system for the planners, administrators and farmers...

Project Monitoring NEC

Major objective is to

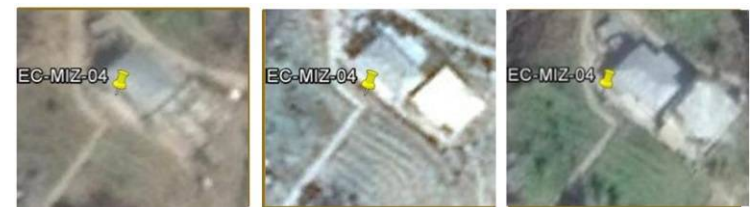
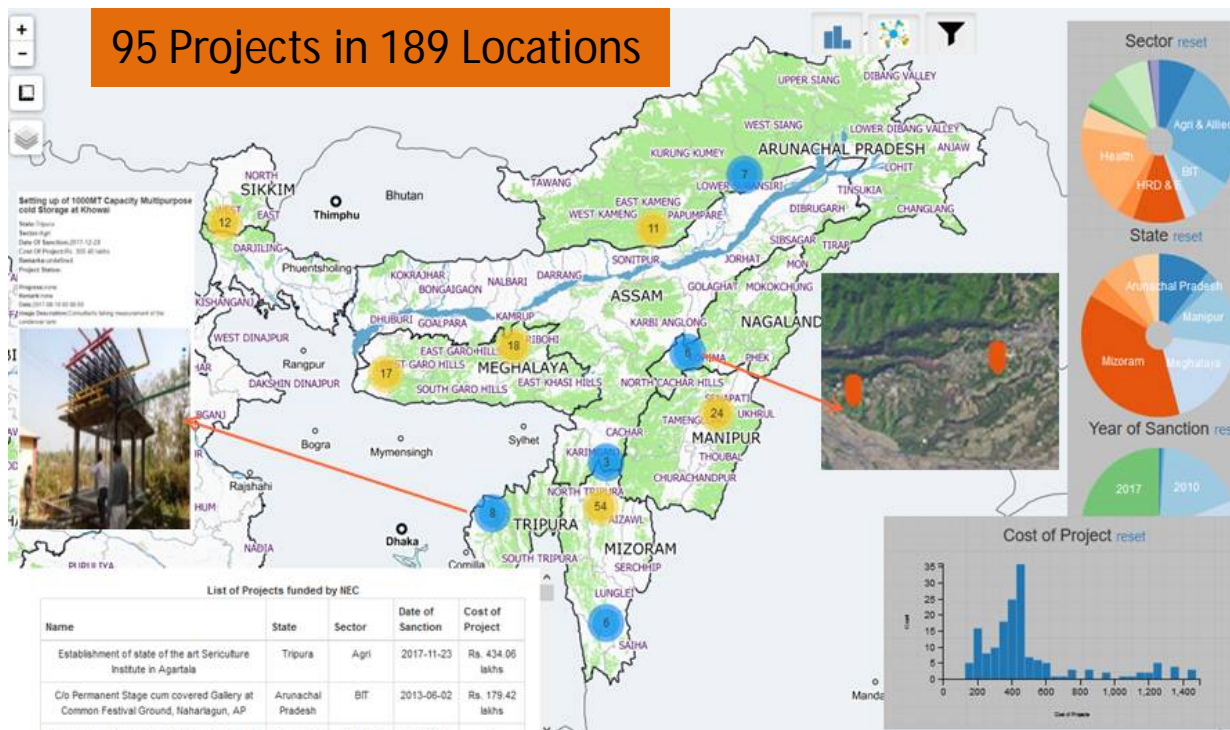
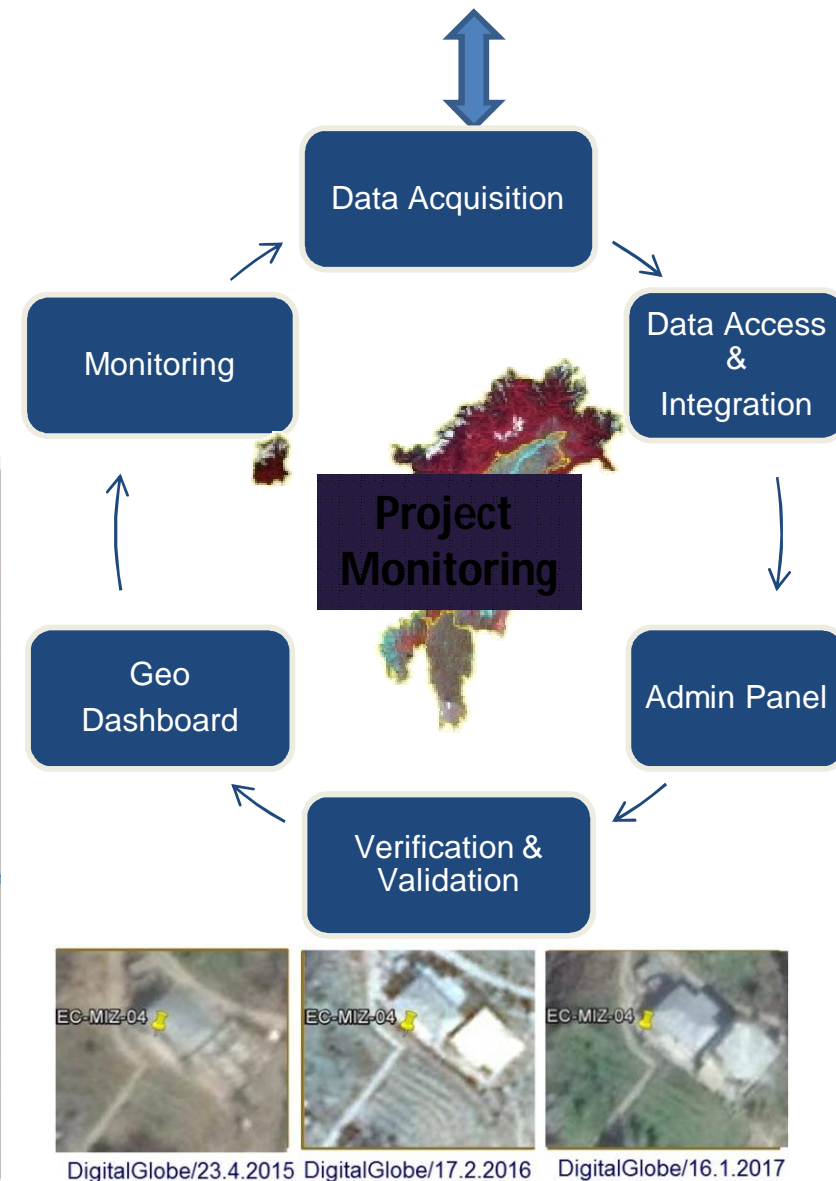
- Monitor the status of the progress of the projects

Dashboard Features

- Project management module
- Monitoring tool
- Filtering across multiple parameters
- Status verification module

Mobile App Features

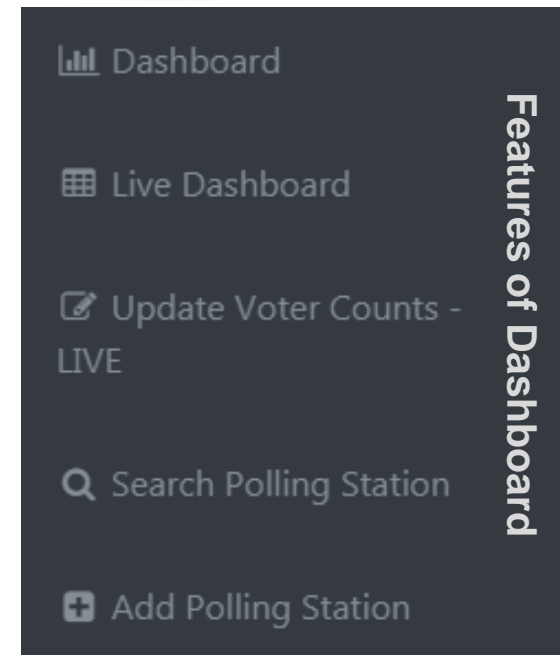
- Status reporting [on/off line]
- Posting status to the Dashboard
- Data Verification
- Spatial visualization of Projects



DigitalGlobe/23.4.2015 DigitalGlobe/17.2.2016 DigitalGlobe/16.1.2017

Election e-Atlas for Meghalaya

- **Major goal is to support**
 - Election planning and management
 - Live election monitoring
- **Major Achievements**
 - Live updates provided to DC Ribhoi and DC East Garo Hills of legislative assembly polls 2018.
 - Assisted planning of Meghalaya legislative assembly election 2018.



e-ATLAS effectively used by Deputy Commissioner, Ribhoi on 27 February, 2018

Control room setup at DC office



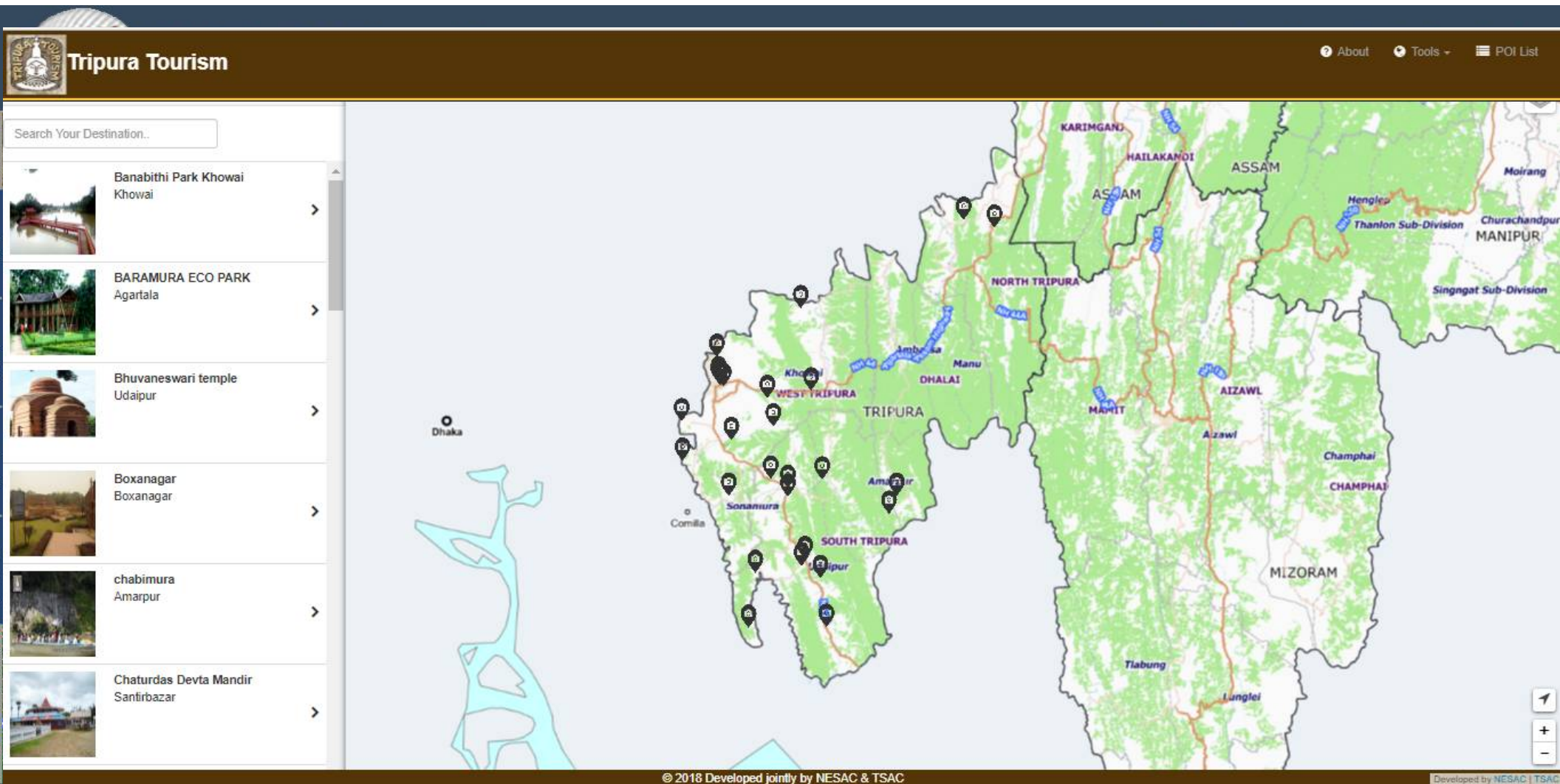
Live updates at DC Office



With Deputy Commissioner



GeoTourism : *tourism.nedrp.gov.in*



Geospatial Inputs for enhancing Tourism in NE Region

Major goal-

- Showcasing important tourist Spots over Indian Satellite imagery
- Exploring new tourist sites

Dashboard contains

- 300+ tourist spots, Infra./Utility information in spatial domain
- Query/Proximity to the relevant

Forest Fire Dashboard: *forest.nedrp.gov.in*

Major goal is to support

- Visualization of current forest fire incidents (FFI)
- Generating FF severity
- Active FF alerts
- Archival of 40K FFI since 2014
- Integration of meteorological data

Dashboard contains

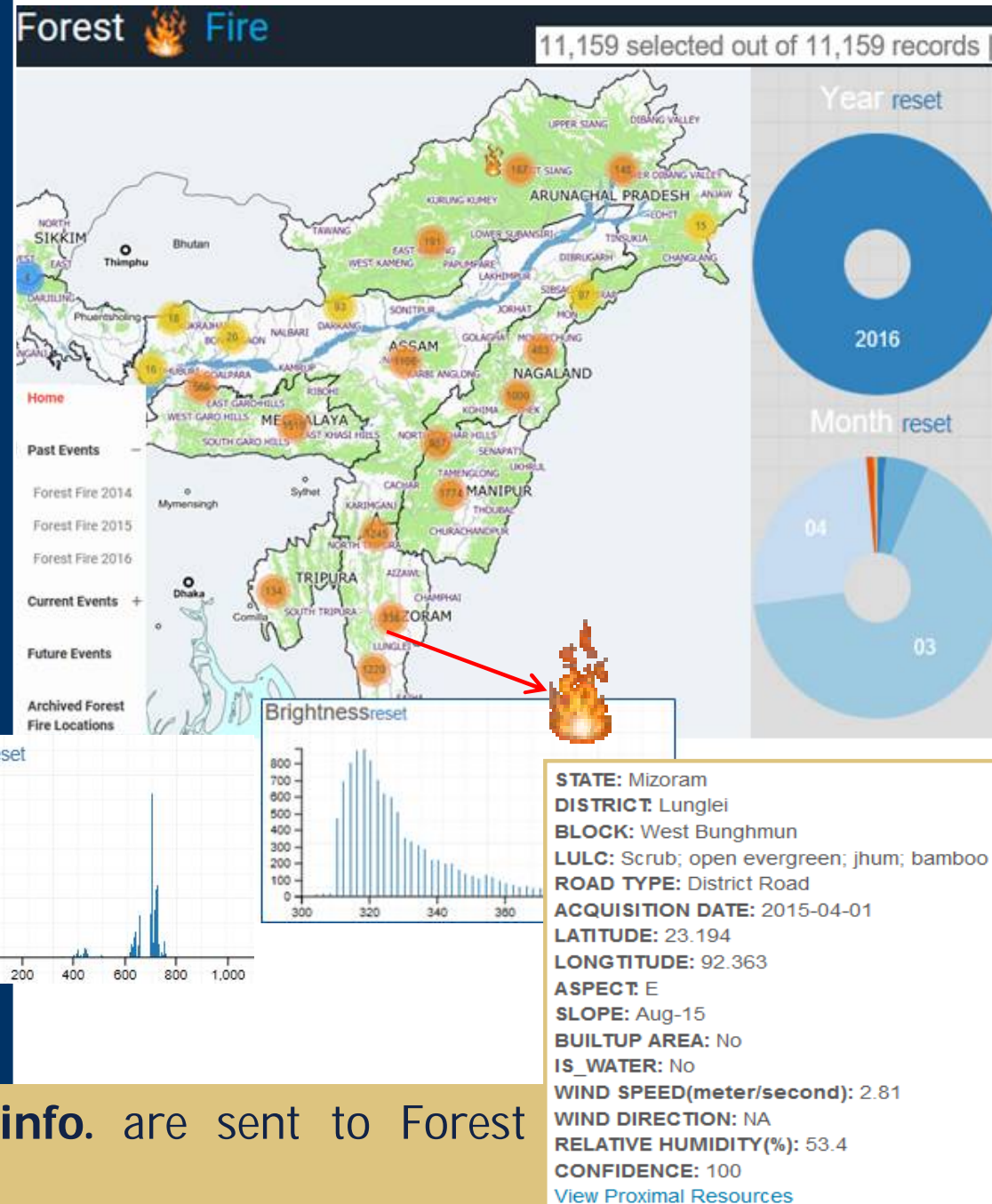
- 40K Forest fire incidents
- Archival of yearly data (2014-17)
- Bhuvan base map/satellite data
- Cross filtering to represent graphical query

Query to

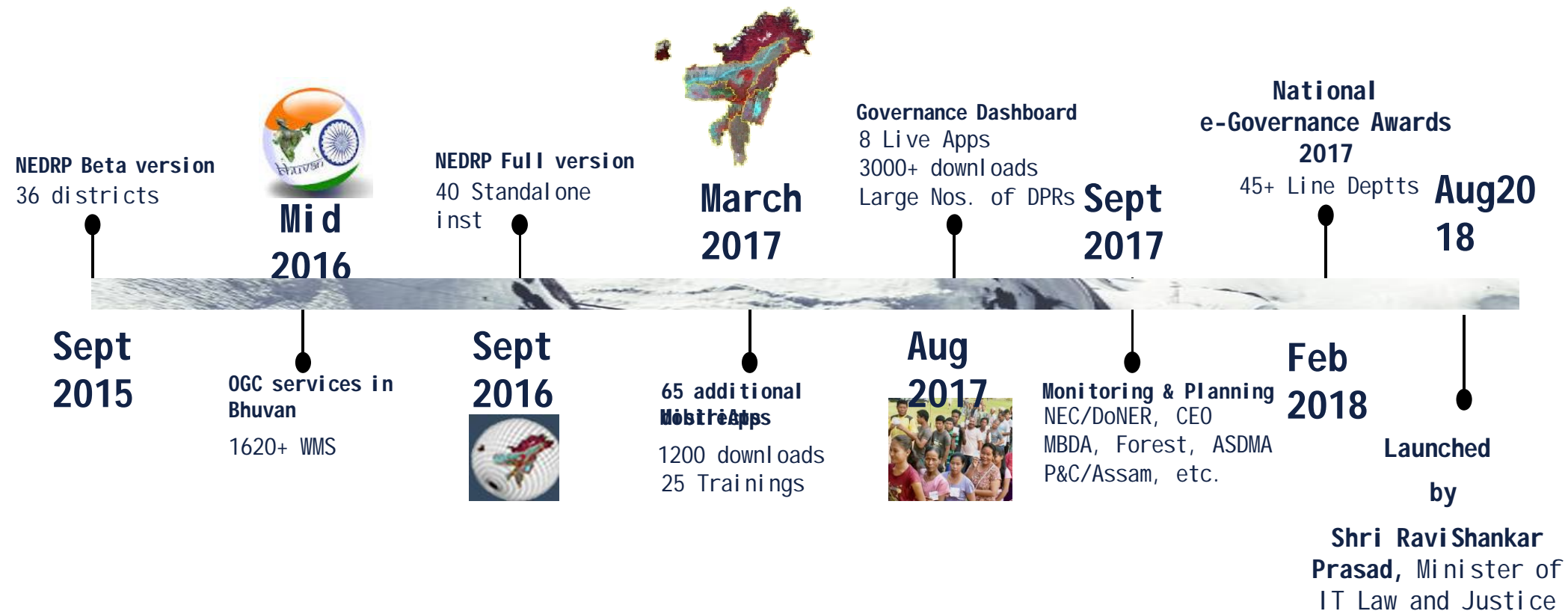
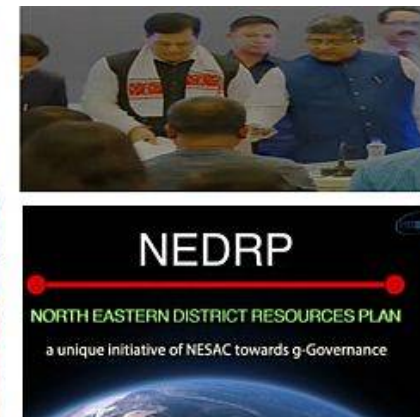
- Existing land-use pattern
- Meteorological parameters

Proximity to (closest distance)

- Water body
- Roads
- Settlements



Forest fire alerts with value added info. are sent to Forest Departments on operational basis



Overall Achievements & Success

List of Users

State Departments (30+)	Central Departments/Academia (15+)
<ol style="list-style-type: none"> 1. SRSAC, Itanagar, Land Record, Planning, S&T- Arunachal Pradesh 2. S&T, Urban Development, Soil & Water Conservation, Irrigation & Flood control, Fishery, SLNA/IWMP, ASDMA, T&D – Assam 3. MARSAC, Revenue, R&D/Panchayatiraj – Manipur 4. Election, Soil, MBDA/IWMP, DDMA, Forest, Urban Planning, Agriculture, MePGCL etc. – Meghalaya 5. MIRSAC, Forest, Planning - Mizoram 6. P&C/NRSGISC, Forest, Urban- Nagaland 7. PWD/PMGSY, TSAC, PWD (R), - Tripura 8. S&T, Forest - Sikkim 	<ol style="list-style-type: none"> 1. NEC, GOI 2. ICAR, Umiam 3. Brahmaputra Board 4. NEHU 5. RMRC, Assam 6. CDAC, Pune 7. SIB, GOI 8. IITG (Civil) 9. Dibrugarh University 10. Tezpur University 11. Guwahati University etc.

Information/maps released

- 1750+ in standalone
- 2820+ via www.nedrp.gov.in
- 1280+ Bhuvan portal

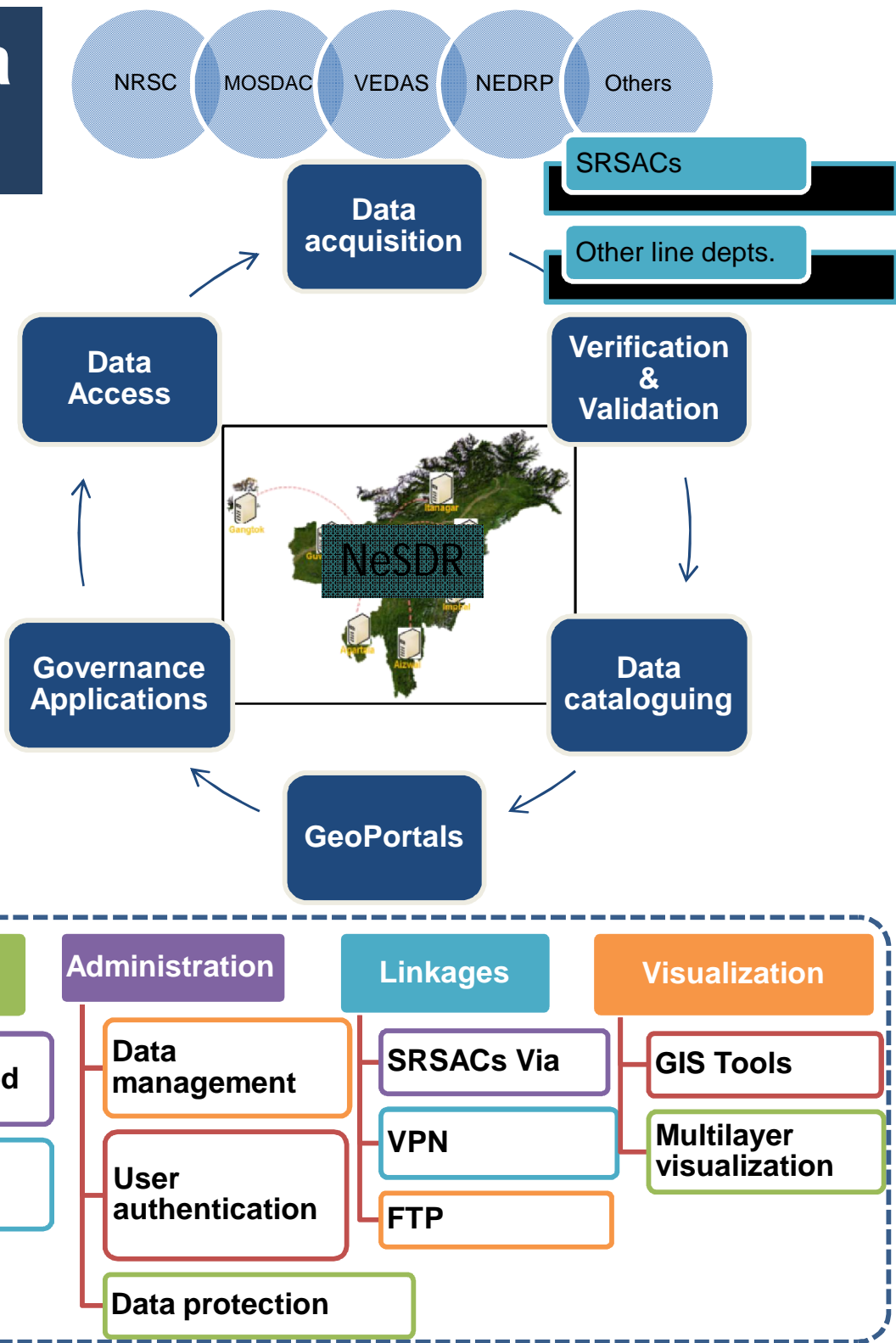
North Eastern Spatial Data Repository(NeSDR)

Objective

- To establish Geospatial Network
- Data Catalogue, processing & refinement
- Development of Hosting platform for geospatial data
- To strengthen the State IT Infra.

Governance Applications

- E Atlas
- Project Monitoring
- Tourism GIS
- Crime GIS
- Health GIS
- Electricity GIS



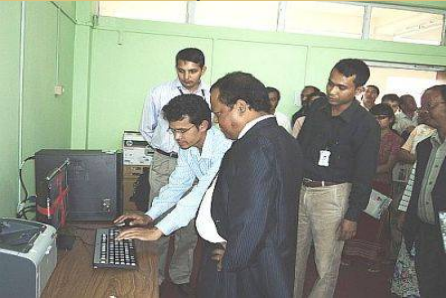
Sensitization- *for more effective Use of Space Inputs for developmental planning*



Thoubal, Manipur



Serchhip, Mizoram



West Khasi, Meghalaya



Makokchung, Nagaland



Prototype demonstrated to Late APJ Abdul Kalam



At ISPRS TC VIII Int. Symposium at Hyderabad



Release of NEDRP



Demonstrated to Governor, Meghalaya



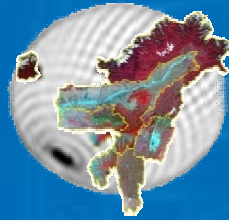
Presented to Hon'ble Union Minister, Dr Harsh Vardhan



DC Office Mizoram

Regional/State level Workshops : 4

District level Workshops/hands-on: 21



Thank You

<http://nedrp.gov.in>