



# GOOD GOVERNANCE INDEX

ASSESSMENT OF STATE OF GOVERNANCE

GGI 2020-21



# Good Governance Index 2020-21



DEPARTMENT OF ADMINISTRATIVE REFORMS & PUBLIC GRIEVANCES  
GOVERNMENT OF INDIA  
NEW DELHI – 110 001

# Good Governance Index (GGI)

---

A uniform tool across States to assess the **State of Governance** and impact of various interventions taken up by the State Governments and Union Territories (UTs)

- ▶ Objectives of GGI
  - ▶ Compare the State of Governance in the States and UTs based on collated quantitative data
  - ▶ Enable States and UTs to formulate and implement suitable strategies for improving governance
  - ▶ Focus on outcome and output oriented approaches and administration

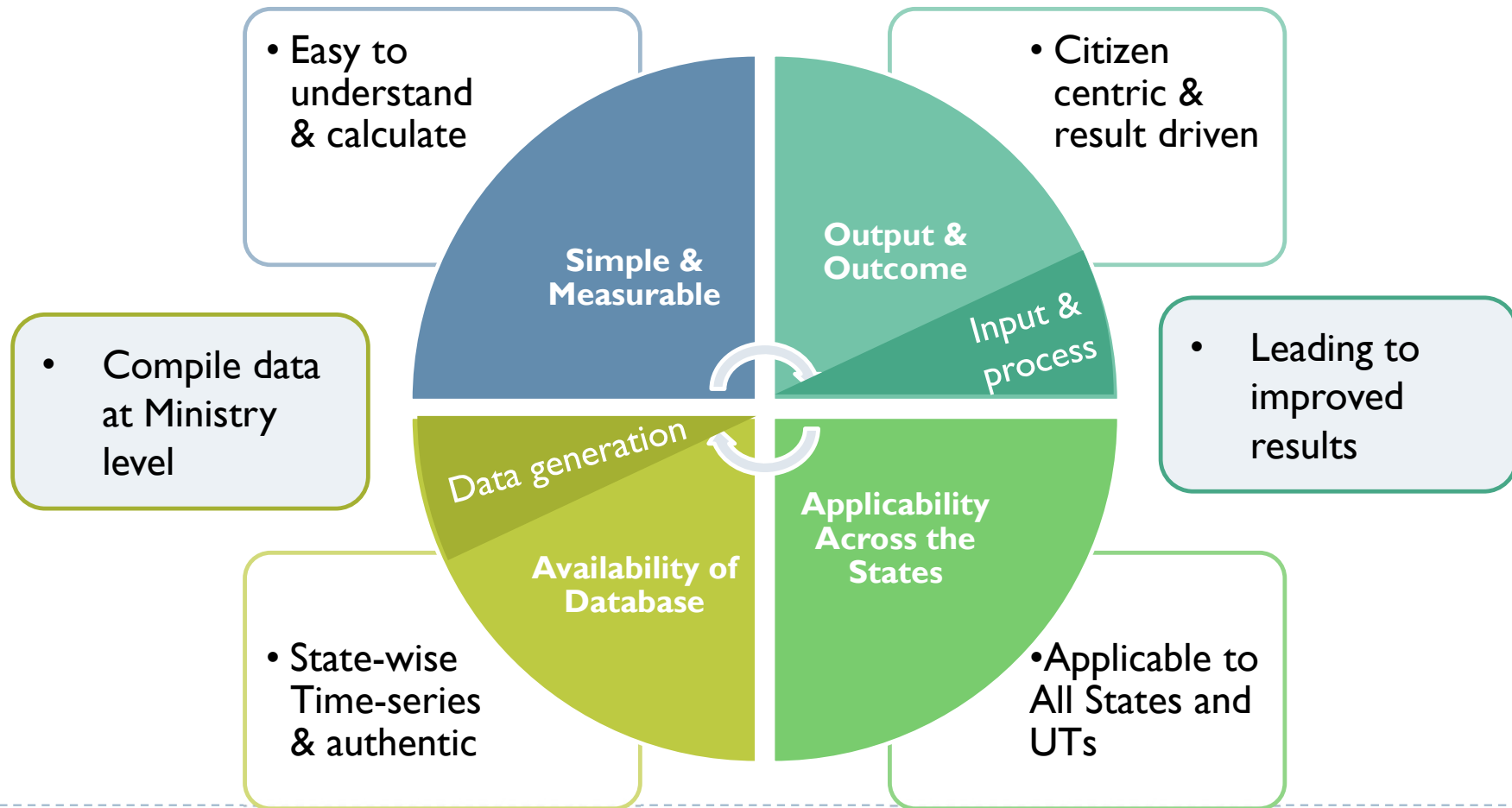


# Good Governance Index (GGI) - Background

---



# Indicator Selection Principles



# Stakeholders Consultations

---

## Consultation Meetings with Ministries of GoI

- Virtual meeting on 01.04.2021
- Inputs received from 23 Ministries/Departments



## Consultations with Sector Experts:

- SDG, Finance, Environment, Governance, etc.
- DARPG & CGG Expert Team

## Consultation with the States & UTs

- Virtual meeting on 01.04.2021
- Inputs received from 19 States

## Constant Guidance from DARPG

- Technical inputs & suggestions
- Support in reaching out to Ministries and States/UTs

# Stakeholders Consultations – Contd.

---

GGI Framework was hosted on DARPG portal

MoSPI contacted for updated data sources for identified indicators

Received inputs from 23 Ministries / Departments and 19 States & UTs

# Approach for wholistic Governance Index

---

- ▶ As a gradual progression, some additional aspects are included in the framework of GGI
- ▶ In addition to the existing quantitative Indicators, additional process and input-based indicators are made part of GGI 2021 framework.
- ▶ New GGI framework focuses on process reengineering efforts, efficient grievance redressal mechanism and improvement in service delivery mechanism in terms of use of ICT, access to information, etc.
- ▶ Inclusion of additional dimensions is to make GGI a more wholistic tool of measuring governance.
- ▶ A roadmap of inclusion of qualitative aspects, approach for inclusion of new indicators and making the required data available for index computation is part of GGI 2021

# GGI-2020-21 Sectors & Indicators

#	Governance Sectors	No. of Indicators	#	Governance Sectors	No. of Indicators
1.	Agriculture and Allied	8	6.	Economic Governance	4
2.	Commerce & Industry	5	7.	Social Welfare & Development	10
3.	Human Resource Development	7	8.	Judicial & Public Security	5
4.	Public Health	6	9.	Environment	4
5.	Public Infrastructure & Utilities	6	10.	Citizen Centric Governance	3
				<b>Total</b>	<b>58</b>



# Grouping of States

Other States – Group A	Other States – Group B
<ul style="list-style-type: none"><li>i. Andhra Pradesh</li><li>ii. Goa</li><li>iii. Gujarat</li><li>iv. Haryana</li><li>v. Karnataka</li><li>vi. Kerala</li><li>vii. Maharashtra</li><li>viii. Punjab</li><li>ix. Tamil Nadu</li><li>x. Telangana</li></ul>	<ul style="list-style-type: none"><li>i. Bihar</li><li>ii. Chhattisgarh</li><li>iii. Jharkhand</li><li>iv. Madhya Pradesh</li><li>v. Odisha</li><li>vi. Rajasthan</li><li>vii. Uttar Pradesh</li><li>viii. West Bengal</li></ul>
North East and Hill States	UTs
<ul style="list-style-type: none"><li>i. Arunachal Pradesh</li><li>ii. Assam</li><li>iii. Manipur</li><li>iv. Meghalaya</li><li>v. Mizoram</li><li>vi. Nagaland</li><li>vii. Sikkim</li><li>viii. Tripura</li><li>ix. Jammu &amp; Kashmir*</li><li>x. Himachal Pradesh</li><li>xi. Uttarakhand</li></ul>	<ul style="list-style-type: none"><li>i. Chandigarh</li><li>ii. Dadra and Nagar Haveli*</li><li>iii. Daman and Diu*</li><li>iv. Lakshadweep</li><li>v. Puducherry</li><li>vi. Andaman and Nicobar Islands</li><li>vii. National Capital Territory of Delhi</li></ul>

\* = Data for most of the indicator are yet to be made available in segregated manner for UT of J&K and Ladakh, so J&K is being included as State in NE&HS category. Whereas data for UTs of D&D and D&NH are yet to be available as one UTs and hence they are included as separate UTs.

# Salient outcomes of GGI 2021

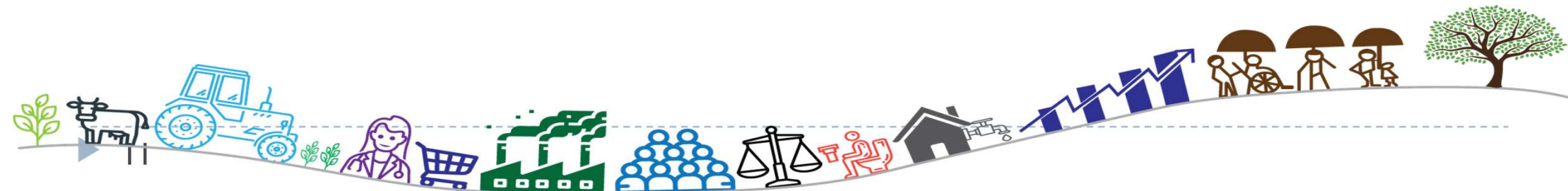
---

- ▶ 20 States have improved their composite GGI in 2021
- ▶ Gujarat tops the composite ranking in the 58 Indicator Index followed by Maharashtra and Goa
- ▶ Uttar Pradesh registers 8.9% improvement in composite GGI score in the period between 2019 and 2021
- ▶ Himachal Pradesh tops composite ranking in NE and Hill States
- ▶ Jammu and Kashmir registers 3.7% improvement in composite GGI score in the period between 2019 and 2021
- ▶ Delhi tops in the Union Territories category

---

# **Incremental Change between GGI-I and GGI-II**

**20 States have improved their composite GGI scores over  
the GGI 2019 index scores**



# Incremental Progress - Group A States

#	States	Score		Change	
		GGI - 2020-21*	GGI - 2019	Numbers	Percentage
1	Andhra Pradesh	4.47	5.05	-0.58	-11.4
2	Goa	5.35	4.29	1.06	24.7
3	Gujarat	5.66	5.04	0.62	12.3
4	Haryana	5.33	5.00	0.33	6.6
5	Karnataka	5.11	5.10	0.01	0.2
6	Kerala	5.22	4.98	0.24	4.8
7	Maharashtra	5.43	5.40	0.03	0.5
8	Punjab	4.97	4.57	0.40	8.7
9	Tamil Nadu	5.05	5.62	-0.57	-10.1
10	Telangana	4.84	4.83	0.01	0.2

Note: \* = Score arrived as per the indicators included in GGI 2020-21 and assigned weightages

# Incremental Progress - Group A States

---

- ▶ Gujarat tops the composite rank in Group A States;
  - ▶ registering improvement in HRD, Public Infrastructure & Utilities, Economic Governance, Social Welfare and Development and Judiciary and Public Safety
- ▶ In Group A states, Goa has shown the highest incremental change of 24.7% in 2020-21 over 2019 followed by Haryana (6.6%) and Kerala (4.8%)
- ▶ Maharashtra (0.5%), Punjab (0.4%), both Telangana and Karnataka (0.2%) are the remaining four States that are registering a incremental growth albeit a marginal growth

# Incremental Progress - Group B States

#	States	Score		Change	
		GGI - 2020-21*	GGI - 2019	Numbers	Percentage
1	Bihar	4.62	4.40	0.22	5.0
2	Chhattisgarh	4.86	5.05	-0.18	-3.7
3	Jharkhand	4.76	4.23	0.53	12.6
4	Madhya Pradesh	4.89	4.85	0.04	0.7
5	Odisha	4.58	4.44	0.14	3.2
6	Rajasthan	4.88	4.80	0.08	1.7
7	Uttar Pradesh	4.63	4.25	0.38	8.9
8	West Bengal	4.52	4.84	-0.32	-6.6

Note: \* = Score arrived as per the indicators included in GGI 2020-21 and assigned weightages

# Incremental Progress - Group B States

---

- ▶ In Group B States, Madhya Pradesh has secured top rank followed Rajasthan and Chhattisgarh
- ▶ Uttar Pradesh registered an overall increase of 8.9%; second position in Commerce & Industry Sector and registered improvement in Social Welfare & Development and Judiciary & Public Safety
- ▶ Jharkhand has shown the highest incremental change of 12.6% in 2021 over 2019
- ▶ Bihar with 5.0%, Odisha (3.2%) and Rajasthan (1.7%) are the next cohort of States that have registered impressive growth

# Incremental Progress - NE & Hill States

#	States	Score		Change	
		GGI - 2020-21*	GGI - 2019	Numbers	Percentage
1	Arunachal Pradesh	2.84	3.03	-0.19	-6.2
2	Assam	4.04	4.07	-0.03	-0.6
3	Himachal Pradesh	5.08	5.22	-0.13	-2.6
4	J & K	4.19	4.04	0.15	3.7
5	Manipur	3.49	3.93	-0.44	-11.2
6	Meghalaya	3.48	3.81	-0.33	-8.8
7	Mizoram	4.87	4.41	0.46	10.4
8	Nagaland	3.62	3.55	0.07	1.9
9	Sikkim	4.40	4.21	0.20	4.7
10	Tripura	4.51	4.50	0.01	0.1
11	Uttarakhand	4.84	4.87	-0.03	-0.5

Note: \* = Score arrived as per the indicators included in GGI 2020-21 and assigned weightages



# Incremental Progress - NE & Hill States

---

- ▶ Himachal Pradesh is in the top rank among NE and Hills States followed by Mizoram and Uttarakhand
- ▶ Jammu & Kashmir has shown 3.7% growth in 2021 over 2019 in Composite Score with an overall improvement in Agriculture & Allied Sector, Commerce & Industry, Public Infrastructure & Utilities and Judiciary & Public Safety
- ▶ Among NE & Hill States, Mizoram has also shown highest incremental change of 10.4% in 2021 over 2019; with overall improvement in Commerce & Industry, HRD, Public Health and Economic Governance
- ▶ Sikkim with 4.7% and Nagaland with 1.9% have also shown good growth in composite scores

# Incremental Progress - UTs

#	States	Score		Change	
		GGI - 2020-21*	GGI - 2019	Numbers	Percentage
1	A&N Islands	4.22	4.12	0.10	2.5
2	Chandigarh	4.54	4.68	-0.14	-3.1
3	D&N Haveli	3.95	3.12	0.83	26.6
4	Daman & Diu	4.54	4.33	0.21	5.0
5	Delhi	5.00	4.39	0.61	14.0
6	Lakshadweep	3.35	2.97	0.38	12.8
7	Puducherry	4.71	4.69	0.02	0.4

Note: \* = Score arrived as per the indicators included in GGI 2020-21 and assigned weightages

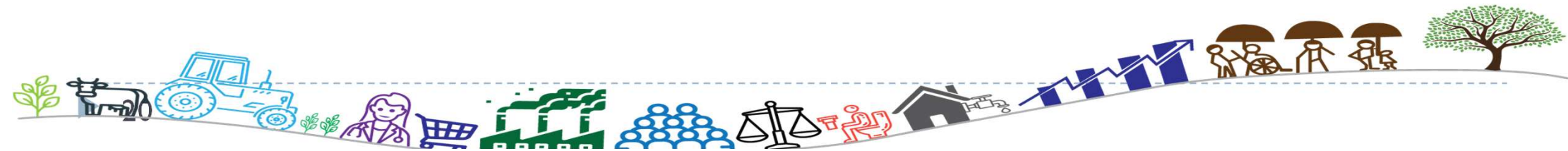
# Incremental Progress - UTs

---

- ▶ Delhi has registered 14% growth in composite score in 2021 and occupies top rank among Union Territories
- ▶ Dadar Nagar Haveli with 26.6% followed by Lakshadweep with 12.8 % are the other top UTs that have registered significant growth in 2021 over 2019
- ▶ Other UTs which registered growth in 2021 are Daman Diu with 5.0%, A&N Islands with 2.5% and Puducherry with 0.4%

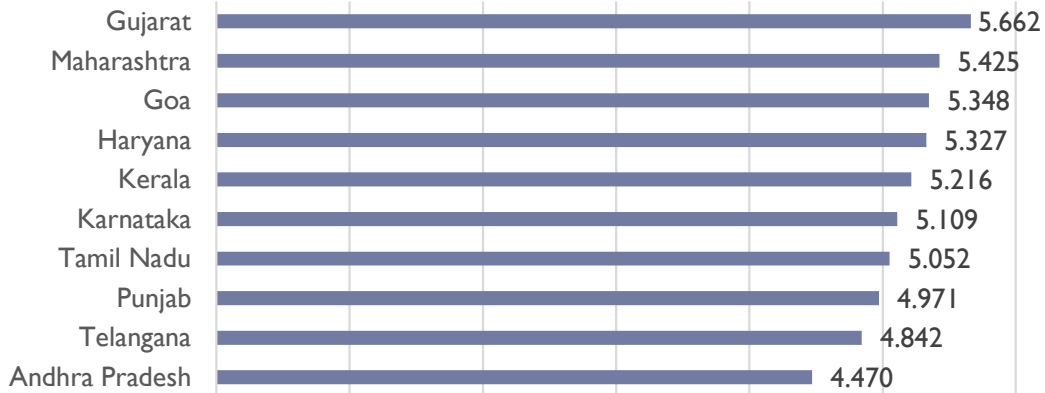
---

# Composite Ranking

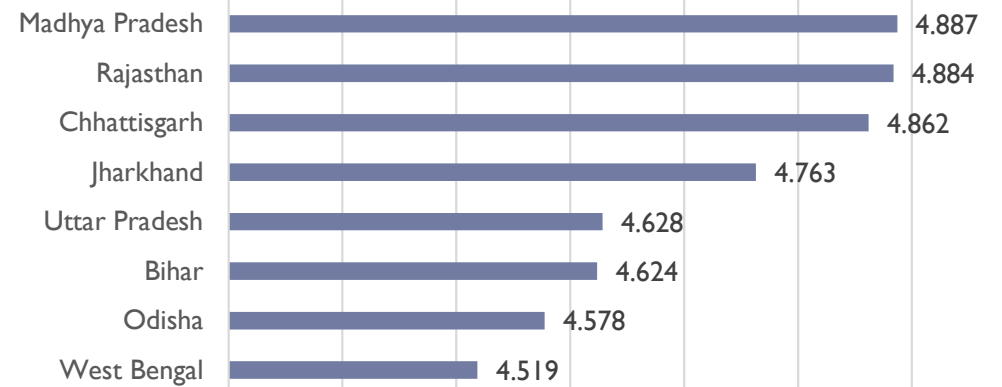


# Composite Rankings

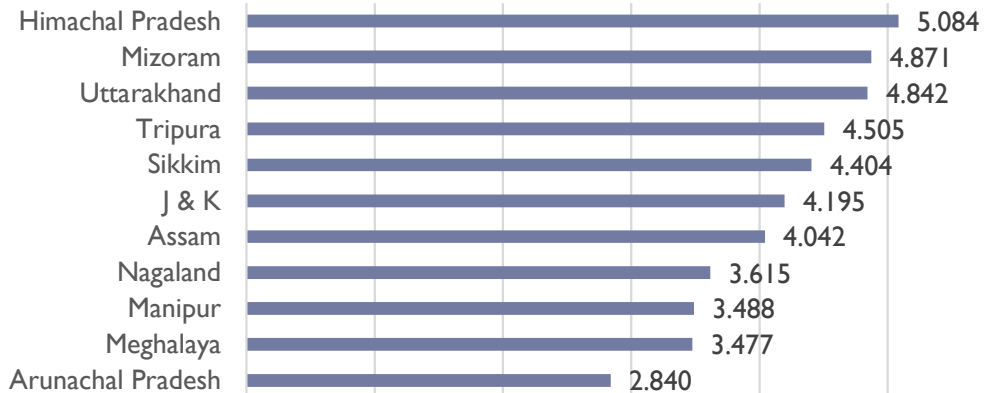
## Other States – Group A



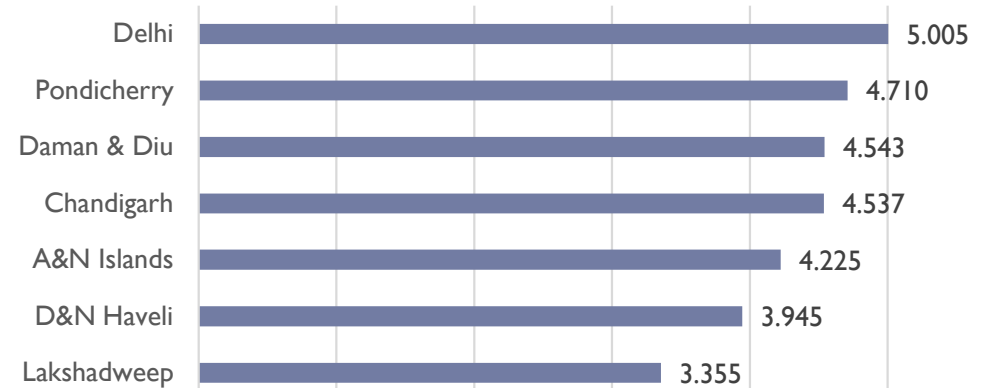
## Other States – Group B



## North East & Hill States



## Union Territories



Thank You